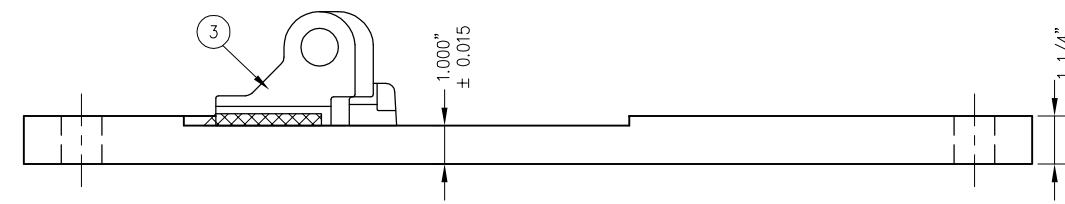
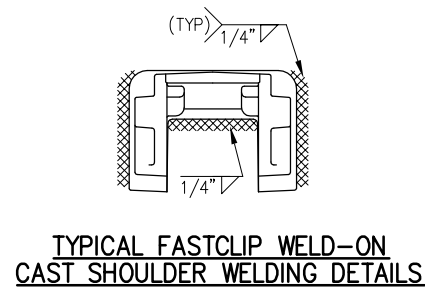


HTP-208-L



HTP-209-R



BILL OF MATERIAL				
ITEM	QTY FOR HTP-208-L	QTY FOR HTP-209-R	DESCRIPTION	DWG NO
1	1	1	BURNED SWITCH PLATE, 1 1/4" THICK	-
2	1	1	WELD-ON FASTCLIP SHOULDER	-
3	1	1	LV BRACE RETENTION BLOCK	-

NOTES:

1. I.D. CHARACTERS SHALL BE 5/8" MINIMUM HEIGHT CLEARLY STAMPED AS SHOWN
2. SLOTTED HOLE CENTERS ARE INDICATED ON DRAWING

PENINSULA CORRIDOR JOINT POWERS BOARD

STANDARD DRAWINGS

CADD FILE NO.: SD-2307

REV	DATE	BY	CHK	APP	DESCRIPTION

APPROVED BY:
Bernard Anagnostis ENGINEERING MANAGER
Steph Chen DEPUTY DIRECTOR OF ENGINEERING



SPECIAL TRACKWORK
 GENERAL ELEMENTS
 SWITCH PLATES FOR HOLLOW STEEL TIES
 PLATES HTP-208-L AND HTP-209-R

REV	DATE
0	093011

SPECIAL TRACKWORK
 STANDARD NO.: SD-2307