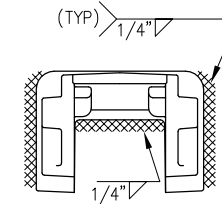
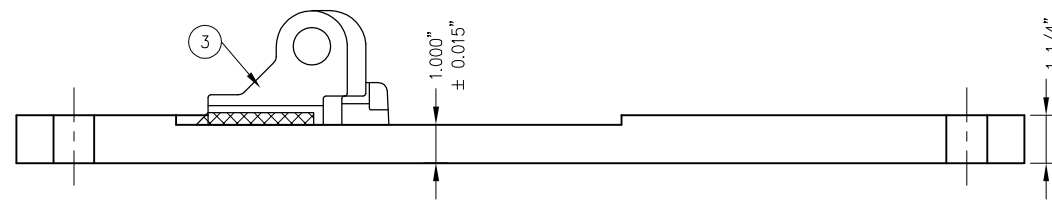


| BILL OF MATERIAL | | | |
|------------------|---------------------|-----------------------------------|--------|
| ITEM | QTY FOR HTP-206-STR | DESCRIPTION | DWG NO |
| 1 | 1 | BURNED SWITCH PLATE, 1 1/4" THICK | - |
| 2 | 1 | WELD-ON FASTCLIP SHOULDER | - |
| 3 | 1 | LV BRACE RETENTION BLOCK | - |



TYPICAL FASTCLIP WELD-ON CAST SHOULDER WELDING DETAILS


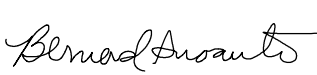



HTP-206-STR

NOTES:

1. I.D. CHARACTERS SHALL BE 5/8" MINIMUM HEIGHT CLEARLY STAMPED AS SHOWN.
2. SLOTTED HOLE CENTERS ARE INDICATED ON DRAWING.

| REV | DATE | BY | CHK | APP | DESCRIPTION |
|-----|------|----|-----|-----|-------------|
| | | | | | |
| | | | | | |
| | | | | | |

| | | | | |
|---|--|--|--|---------------------------|
| PENINSULA CORRIDOR JOINT POWERS BOARD | | STANDARD DRAWINGS | | CADD FILE NO.: SD-2305 |
| APPROVED BY: | |  | | REV 0 |
|   | | | | DATE 093011 |
| ENGINEERING MANAGER | | DEPUTY DIRECTOR OF ENGINEERING | | SPECIAL TRACKWORK |
| 1250 San Carlos Avenue San Carlos, CA 94070 | | SPECIAL TRACKWORK GENERAL ELEMENTS SWITCH PLATES FOR HOLLOW STEEL TIES PLATE HTP-206-STR NO SKEW LV BRACE | | STANDARD NO.: |
| | | | | SD-2305 |