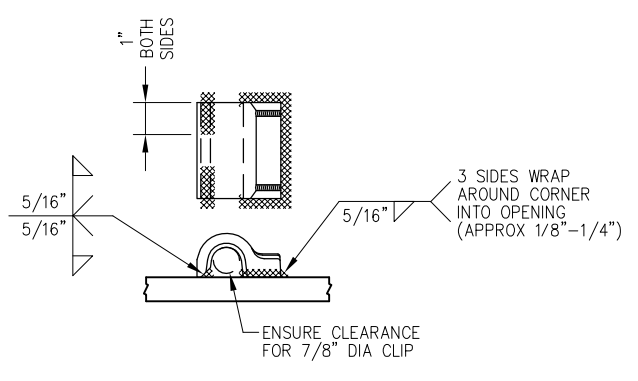
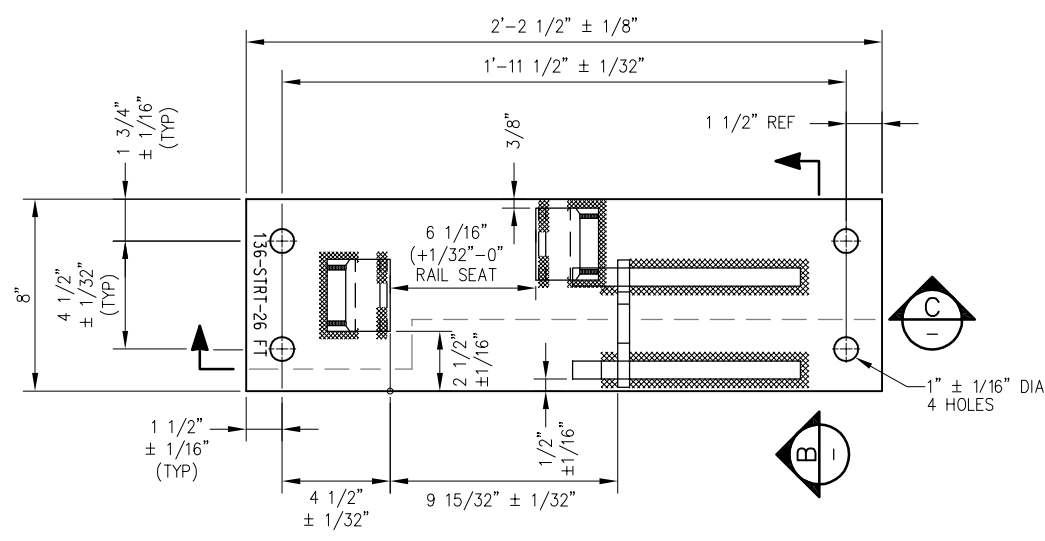
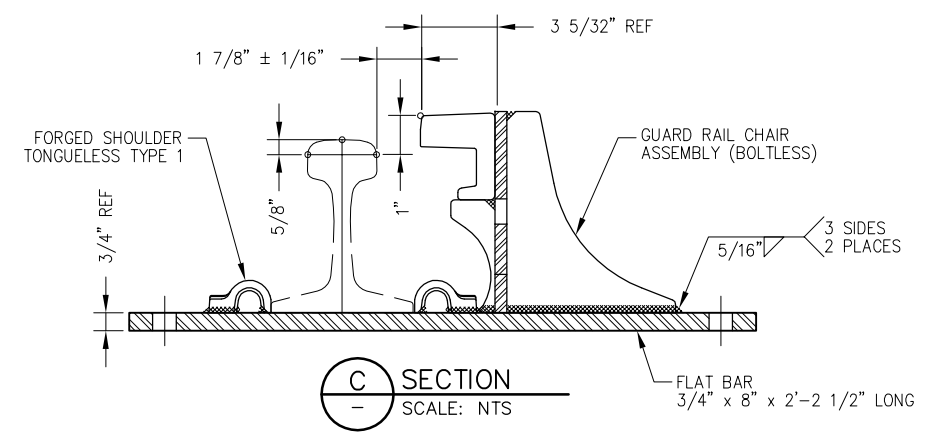
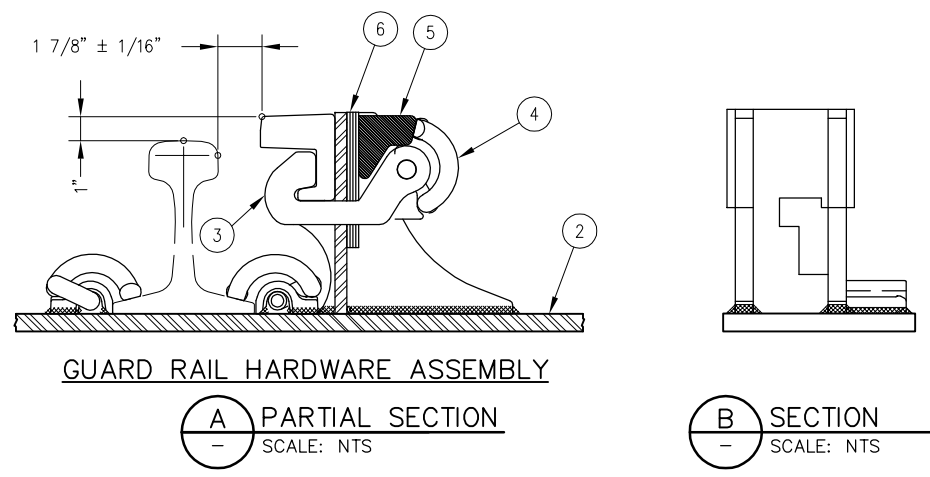
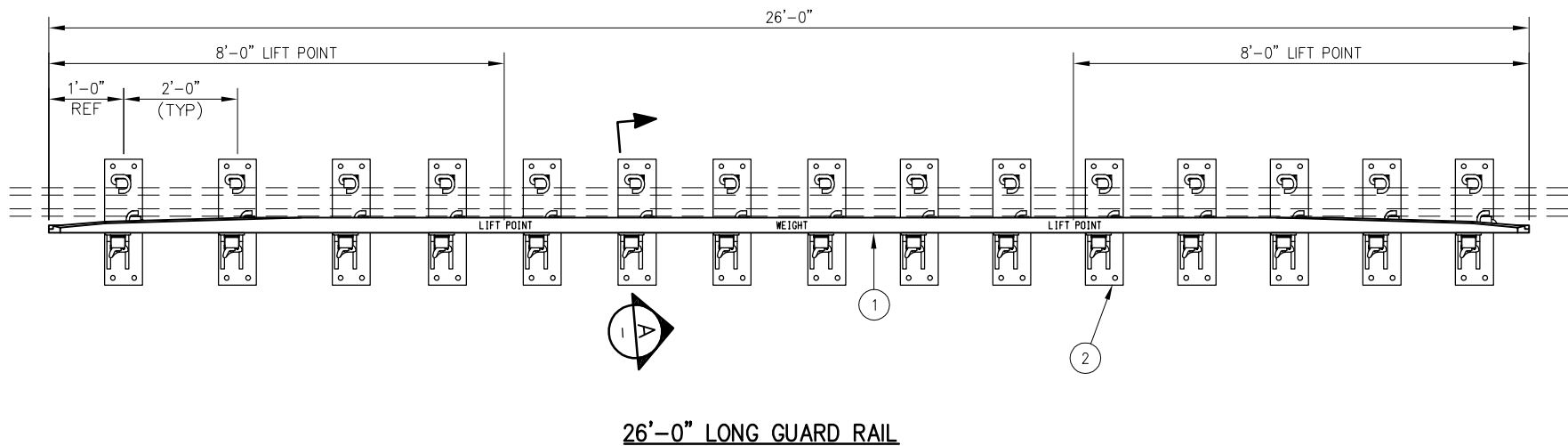


BILL OF MATERIAL			
ITEM	QTY	DESCRIPTION	DWG NO
1	1	GUARD BAR, UIC33 1200 SERIES x 26'-0" LONG	-
2	13	GUARD RAIL PLATE ASSEMBLY, RAISED 1", STRAIGHT	-
3	13	H-CLAMP	-
4	39	CLIP, PANDROL, E2055	-
5	13	LOCKING BLOCK	-
6	52	SHIM, 1/8" x 3" x 6"	-



- NOTES:**
1. PLATE SPACING IS SET FOR SHIPPING ONLY. FINAL PLATE SPACING SHALL BE DETERMINED BY THE SPACING AT TIME OF INSTALLATION
  2. PANDROL SPRING CLIPS (E2055) SHALL BE INCLUDED IN ASSEMBLY
  3. LIFT POINTS AND WEIGHT OF ASSEMBLY SHALL BE MARKED ON HEAD OF WEAR BAR WITH WHITE PAINT
  4. PLATE SHALL BE STAMPED WITH PLATE I.D. WITH 1/2" HIGH CHARACTERS AS SHOWN
  5. GRIND AWAY CORNER OF PANDROL SHOULDER SHALL CLEAR FOOT OF CHAIR ASSEMBLY

REV	DATE	BY	CHK	APP	DESCRIPTION	REV	DATE	BY	CHK	APP	DESCRIPTION

<b>PENINSULA CORRIDOR JOINT POWERS BOARD</b>		<b>STANDARD DRAWINGS</b>	CADD FILE NO.: SD-2301
APPROVED BY: <i>Bernard Anagnost</i> <i>Steph Chen</i>		SPECIAL TRACKWORK GENERAL ELEMENTS GUARD RAIL ASSEMBLY STRAIGHT WITH PLATES 26'-0" LONG	REV: 0 DATE: 093011
ENGINEERING MANAGER      DEPUTY DIRECTOR OF ENGINEERING			STANDARD NO.: SD-2301