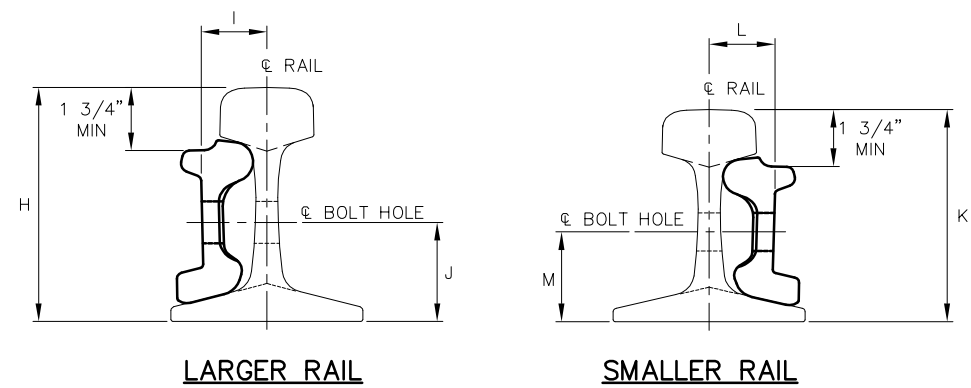
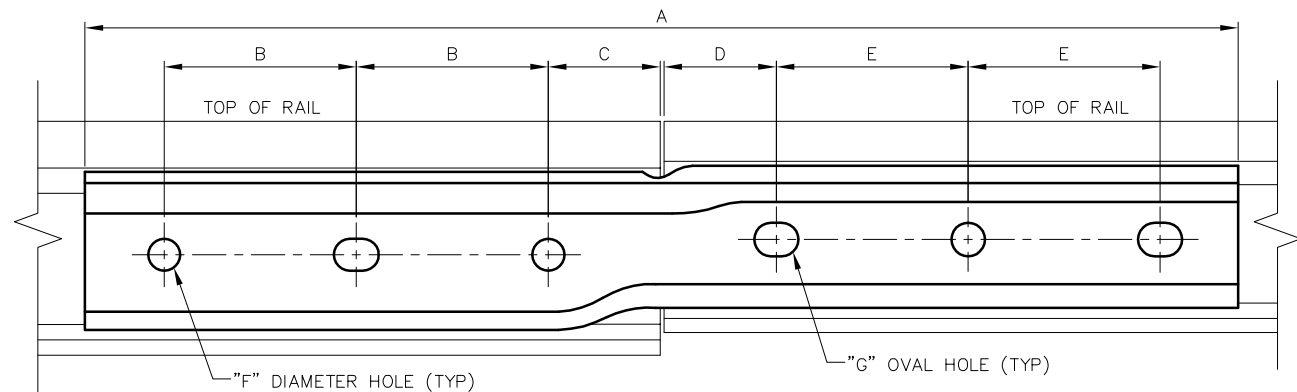


TYPICAL INSTALLATION LAYOUT

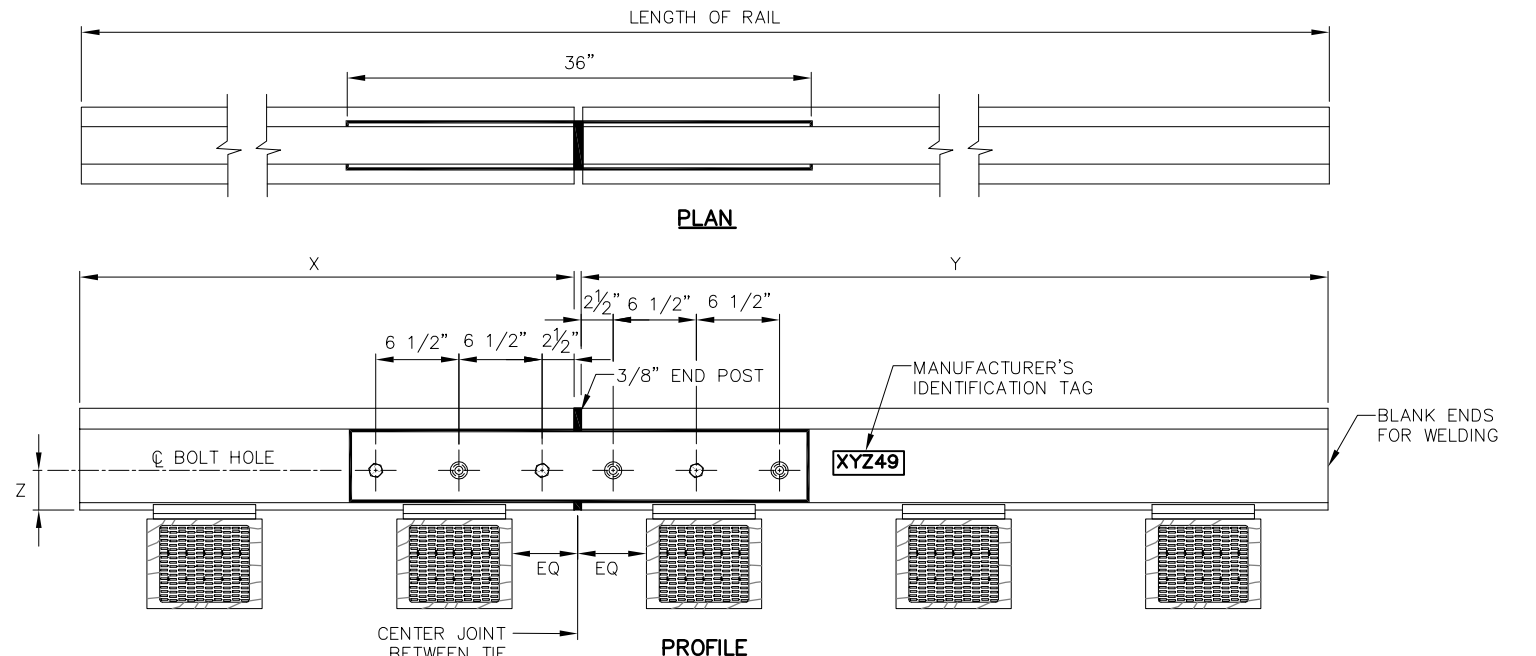


LARGER RAIL

SMALLER RAIL



6-HOLE OUT BAR DETAIL



PREFABRICATED BONDED INSULATED JOINT

DATA FOR INSULATED JOINT RAIL

LENGTH OF RAIL	X	Y	Z
19'-6"	8'-0 1/2"	11'-5 1/8"	3 3/32"
39'-0"	16'-1"	22'-10 5/8"	3 3/32"

DATA FOR COMPROMISE JOINTS

RAIL SIZES	A	B	C	D	E	F	G	H	I	J	K	L	M
136 RE & 112 RE	36"	6 1/2"	2 1/2"	2 1/2"	6 1/2"	1 7/32"	1 3/16" x 1 3/16"	7 5/16"	2 1/32"	3 3/32"	6 5/8"	2 3/16"	2 7/8"
136 RE & 119 RE	36"	6 1/2"	2 1/2"	2 1/2"	6 1/2"	1 7/32"	1 3/16" x 1 3/16"	7 5/16"	2 1/32"	3 3/32"	6 13/16"	2 3/16"	2 7/8"
132 HF & 112 RE	36"	6 1/2"	2 1/2"	2 1/2"	6 1/2"	1 7/32"	1 3/16" x 1 3/16"	7 5/16"	2 3/16"	3 3/32"	6 5/8"	2 3/16"	2 7/8"
132 HF & 113 HF	36"	6 1/2"	2 1/2"	2 1/2"	6 1/2"	1 7/32"	1 3/16" x 1 3/16"	7 5/16"	2 3/16"	3 3/32"	6 13/16"	2 3/16"	2 7/8"
132 HF & 115 RE	36"	6 1/2"	2 1/2"	2 1/2"	6 1/2"	1 7/32"	1 3/16" x 1 3/16"	7 5/16"	2 3/16"	3 3/32"	6 5/8"	2 3/16"	2 7/8"

NOTES:

1. TO DETERMINE A RIGHT HAND OR A LEFT HAND JOINT, STAND AT AND SIGHT ALONG THE CENTERLINE OF THE TRACK IN THE DIRECTION OF THE LIGHT RAIL. RIGHT HAND AND LEFT HAND JOINTS ARE LOCATED ON THE RIGHT AND LEFT RESPECTIVELY
2. EACH BAR SHALL BE MARKED WITH THE RAIL SECTION NEAR EACH END, MANUFACTURER'S IDENTIFICATION, MONTH AND YEAR OF MANUFACTURE NEAR ONE END. HAND ORIENTATION (LH OR RH) MARKED ON THE TOP SURFACE AT THE CENTER OF THE JOINT AND (GAUGE OR OUT)
3. ALL BOLT HOLES SHALL BE CHAMFERED. SEE SD-2201 FOR DETAILS
4. USE 1" 490 HUCK BOLTS FOR INSULATED JOINTS. USE 1 1/8" GRADE 8 BOLTS WITH SECURITY LOCKNUTS LUBRICATED AND TORQUED TO 850 FOOT LBS FOR BOLTED COMP JOINTS
5. ALL BOLTS, NUTS AND WASHERS SHALL CONFORM TO AREMA

**FOR MAINTENANCE REFERENCE ONLY
NOT FOR NEW CONSTRUCTION**

REV	DATE	BY	CHK	APP	DESCRIPTION

PENINSULA CORRIDOR JOINT POWERS BOARD

APPROVED BY:

Bernard Anagnostis *Steph Chen*

ENGINEERING MANAGER DEPUTY DIRECTOR OF ENGINEERING



1250 San Carlos Avenue
San Carlos, CA 94070

STANDARD DRAWINGS

**TRACK
RAILS, TIES, AND FASTENERS
COMPROMISE JOINT
AND INSULATED JOINT**

CADD FILE NO.: SD-2233

REV 0 DATE 093011

TRACK

STANDARD NO.: SD-2233