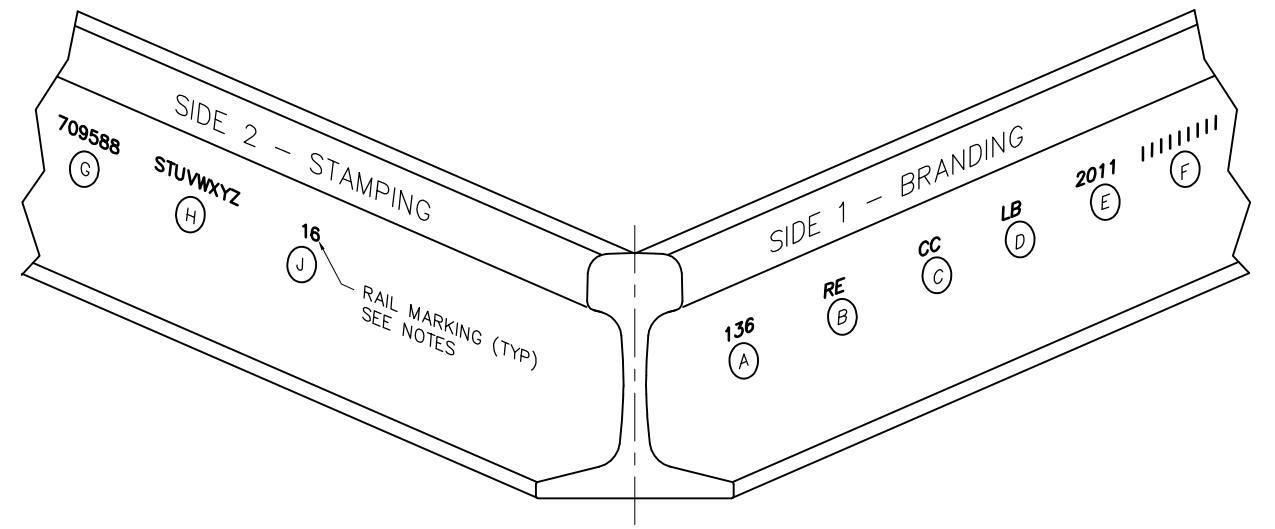
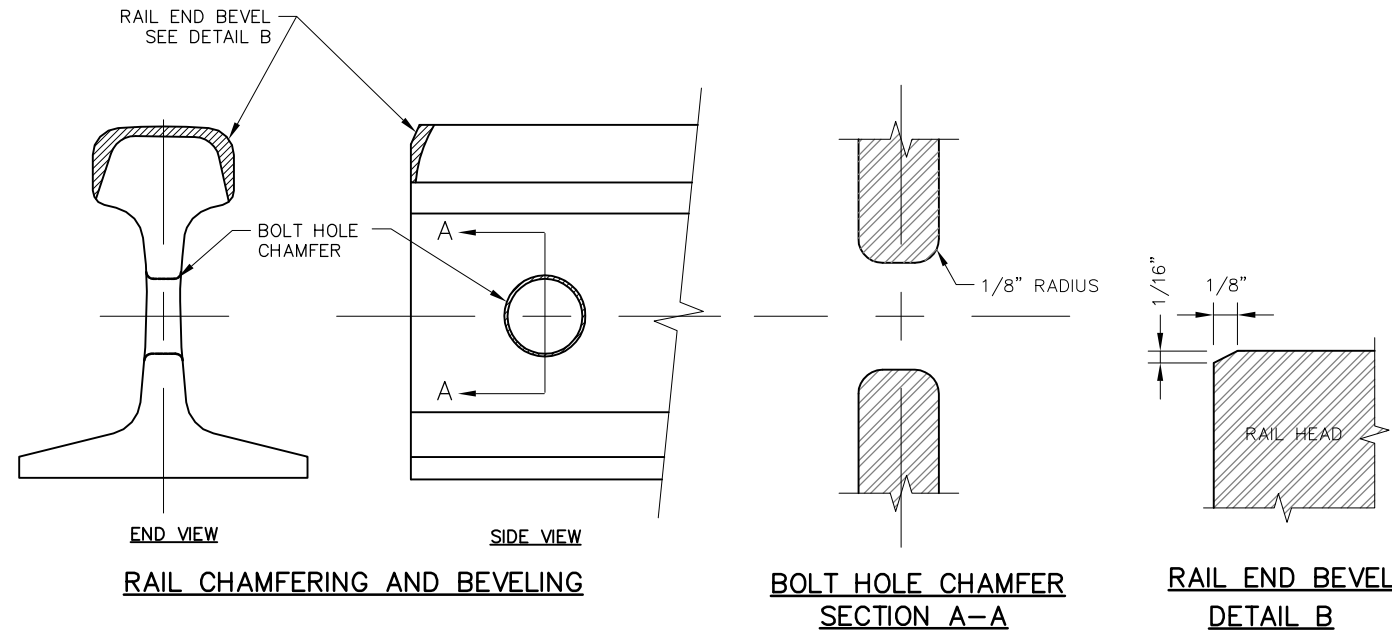


RAIL DRILLING FOR JOINTS

NOTE:
 END OF RAIL DRILLING SHOWN FOR INFORMATION ONLY. END HOLE IS NOT TYPICALLY DRILLED TO FACILITATE RAIL WELDING.



RAIL MARKINGS



RAIL CHAMFERING AND BEVELING

BOLT HOLE CHAMFER SECTION A-A

RAIL END BEVEL DETAIL B

RAIL MARKING NOTES

SIDE 1: BRANDING SHALL BE ROLLED IN RAISED CHARACTERS ON THE SIDE OF THE WEB OF EACH RAIL IN ACCORDANCE TO AREMA.

A = WEIGHT OF RAIL
 B = SECTION
 C = HYDROGEN REDUCTION METHOD (CC = CONTROL COOLED, VT = VACUUM TREATED)
 D = MANUFACTURER (EG, LB = LB FOSTER)
 E = YEAR ROLLED
 F = MONTH ROLLED

SIDE 2: THE WEB OF OPPOSITE SIDE OF THE RAIL SHALL BE HOT STAMPED IN ACCORDANCE TO AREMA.

G = HEAT NUMBER
 H = RAIL LETTER
 J = INGOT NUMBER OR STRAND AND BLOOM NUMBER (IF APPLICABLE)

REV	DATE	BY	CHK	APP	DESCRIPTION

PENINSULA CORRIDOR JOINT POWERS BOARD

APPROVED BY:




ENGINEERING MANAGER DEPUTY DIRECTOR OF ENGINEERING


 1250 San Carlos Avenue
 San Carlos, CA 94070

STANDARD DRAWINGS

TRACK
 RAILS, TIES, AND FASTENERS
 MARKING FOR
 STANDARD RAIL SECTIONS

CADD FILE NO.: SD-2201	
REV 0	DATE 093011
TRACK	
STANDARD NO.: SD-2201	