



Monthly Safety and Security Report January 2015

Safety Highlights

Our Caltrain tracks are continuously inspected by our maintenance staff. On this day, a Rail Safety Officer conducted a random visit to monitor safety during the track inspection. By riding the tracks, known in the rail industry as “hi-railing”, our experienced inspectors assess track conditions from San Jose to San Francisco. To minimize service disruption, hi-railing is coordinated in-between trains and during off peak travel hours. Potential irregularities discovered during these inspections are prioritized for closer inspection and repair. Ultimately, the safety of our passengers as well as the safety of people in the many communities we serve is Caltrain’s highest priority.



Education

Rail Safety Presentations/Activities	City	Attendees
Boy Scouts of America	Belmont	40



Monthly Safety and Security Report January 2015

Enforcement

Event	JAN 2015	YTD 2015	JAN 2014	YTD 2014
Felony and Misdemeanor Arrests (all)	6	6	9	9
Parking Citations	141	141	339	339
Traffic Citations	5	5	27	27
All Other Infraction Citations (including trespassing)	64	64	75	75
Ejections/Contacts: Train, Station, Right of Way	32	32	67	67
Proof-of-Payment Citations	138	138	135	135
Crisis Interventions w/ Emergency Commitments	2	2	3	3
Total Calls For Police Service	787	787	841	841

Significant Events

Jan. 4: Transit Police received two reports of graffiti vandalism at various stations. There are no suspects.

Jan. 9: Transit Police responded to the Tamien Caltrain Station in San Jose on a report of an adult female who was unable to care for herself. The subject was located, taken into protective custody, and transported to emergency psychiatric care.

Jan. 10: Transit Police responded to the right of way in Burlingame on a report of a juvenile male who had been struck by a northbound Caltrain. Preliminary information suggests he may have intentionally placed himself in the path of the oncoming train. The fatality is under investigation by Transit Police.

Jan. 11: Transit Police responded to the Hillsdale Caltrain Station in San Mateo on a report of an adult female who had declining health and was unable to care for herself. The subject was located, taken into protective custody, and transported to emergency psychiatric care.

Jan. 18: Transit Police responded to the San Mateo Caltrain Station on a report of a suicidal adult male. The subject who was trespassing on the tracks was located, taken into protective custody, and transported to emergency psychiatric care.

Jan. 25: Transit Police responded to the right of way in Palo Alto on a report of an adult male who had been struck by a southbound Caltrain. Preliminary information suggests he may have intentionally placed himself in the path of the oncoming train. The fatality is under investigation by Transit Police.



Monthly Safety and Security Report January 2015

Jan. 29: Transit Police responded to the right of way in Mountain View on a report of an adult male who had been struck by a southbound Caltrain. Preliminary information suggests he may have intentionally placed himself in the path of the oncoming train. The fatality is under investigation by Transit Police.

Jan. 1 – Jan. 31: Transit Police responded to nine reports of persons trespassing on the Caltrain right of way. In each instance, the person was cited and released.

Jan. 1 – Jan. 31: Transit Police conducted routine security checks at various Caltrain stations. As a result, five persons were arrested on outstanding misdemeanor and felony warrants and booked into county jail.

Jan. 1 – Jan. 31: Transit Police received 12 reports of bicycle thefts from various Caltrain stations. The largest number of thefts (five) occurred at the Palo Alto University Avenue Caltrain Station.

Jan. 1 – Jan. 31: Transit Police received nine reports of stolen vehicles and two reports of vehicle vandalism from various Caltrain Stations. The largest number of thefts (three) occurred at the Palo Alto Caltrain Station.

Jan. 1 – Jan. 31: Transit Police responded to two reports of intoxicated persons, two minors in procession, and one open alcoholic beverage container at various Caltrain stations. In each instance, the person was arrested and booked into county jail.

Jan. 1 – Jan. 31: Transit Police responded to a stolen vehicle report at the Tamien Caltrain Station in San Jose. This case is under investigation by transit police.

Engineering

Maintenance of Way

- Installed 80 tons of main line ballast
- Surfaced 19,977 linear feet of track
- Installed 132 – nine-foot wood ties on the main line
- Installed nine wood switch ties on the main line
- Installed 20 cross and switch ties in South San Francisco Yard (Re-collectable from Union Pacific Railroad)

Monthly Safety and Security Report January 2015

- Cleared culverts at various locations to prevent flooding at adjacent properties, including the culvert shown below near Tamien Station



Before



After

- Replaced three old style switch stands at the Gilroy Yard with ergonomic switch stands that reduce stress on the user's back

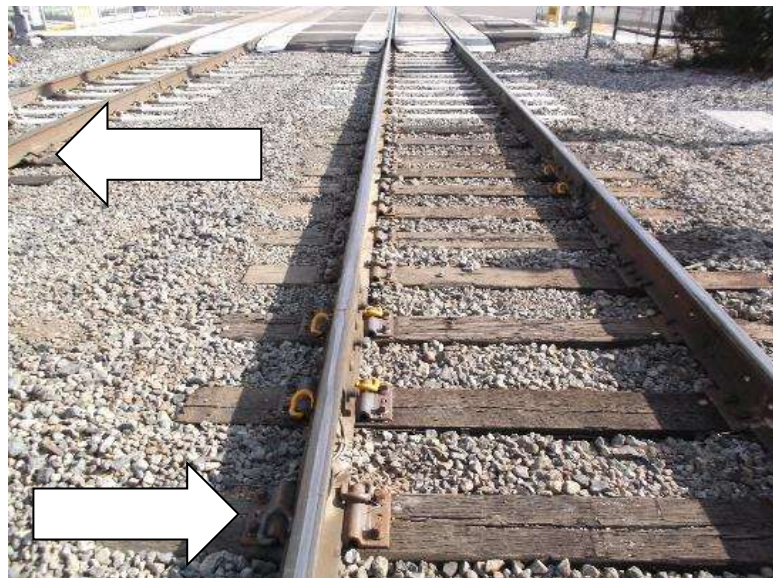


Old style



New style

- Installed new Pandrol 'Elastic Fastener' Plates at the Mary Avenue Grade Crossing in Sunnyvale to help maintain gage and prevent rail rollover



Monthly Safety and Security Report January 2015

- Repaired fences at various locations along the right of way



Curtner Avenue



Almaden Expressway

Stations

- Cleaned the Gilroy platform and station track



Before



After

- Repainted the tactile tile at the Santa Clara Station platform

