



Los Gatos Creek Bridge Replacement Project

Agenda Item 8 b
August 3, 2017

1



Agenda

- I. Overview
- II. Project Description
- III. Project Benefits
- IV. Project Construction
 - I. Construction Challenges
 - II. Construction Status
- V. Questions

2



Overview



Project Location

Located along Caltrain line

- In the City of San Jose
- Bounded by Park Avenue to the north and Interstate 280 to the south



Los Gatos Creek Bridge

- Owned by the Peninsula Corridor Joint Powers Board
 - Maintrack-1 Owned by UPRR
- Exceeded its Life Expectancy
 - Built in 1935
 - Does not meet existing State
 - Has structural deficiencies
 - Southern timber span was damaged by fire
 - Recent Flooding has caused major scour



Project Description



Project Elements

- Demolish existing two-track bridge
- Replace existing bridge with three new single track bridges
 - Meet current safety and seismic codes
 - Include a tail track to maintain rail operations throughout construction
- Build a Retaining Wall
 - Widen Creek Channel
 - Facilitate City of San Jose future bike trail

7



Project Elements

- Santa Clara Drill Track Relocation
 - Located south of the Santa Clara station
 - Relocates a test track (known as a "drill track") five feet to the west of existing location
 - Enables initial testing of future Electric Multiple Units (EMUs) for the Peninsula Corridor Electrification Project (PCEP),
 - Minimizes the impact to the mainline track and revenue operations during EMU testing

8



Project Funding

- Project Authority: \$35,597,800
- Construction Contract Authority: \$17,998,000
 - Contract Awarded in September 2016
 - Contract awarded to DMZ Builders
 - LNTF issued October 2016
 - NTP issued January 2017
 - All Environmental Permits Secured March 2017

9



Project Funding Partners

- Federal Transit Administration (FTA)
- San Francisco County Transportation Authority (SFCTA)
- Santa Clara Valley Transportation Authority (VTA)
- San Mateo County Transit District (SamTrans)



FTA
Federal Transit Administration



10



Project Benefits

11



Project Benefits

- Safe rail operations
- Improves operations at the San Jose Diridon Station
 - Addition of Tail Track
- Enables Testing and Commissioning of EMUs with Minimum impact to the mainline track and revenue operation

12



Construction Challenges

13



Construction Challenges

- **Environmental Limitations**
- **Utilities (PG&E, Fiber Optics, Storm Drain)**
- **Limited Access**
- **Unforeseen Conditions**
flooding, rain days, high water level, creek banks/slopes scour, boulders 10 ft deep, PTC Fiber Relocation

14

Environmental Limitations

- **In-Creek Work:**

- Limited to June through October (Creek Window)
- Requires special measures to protect creek habitat and species

- **Construction:**

- Will take one creek season
- Perform in-creek work from June to October
- Other work outside window



Environmental Limitations

Construction Phases

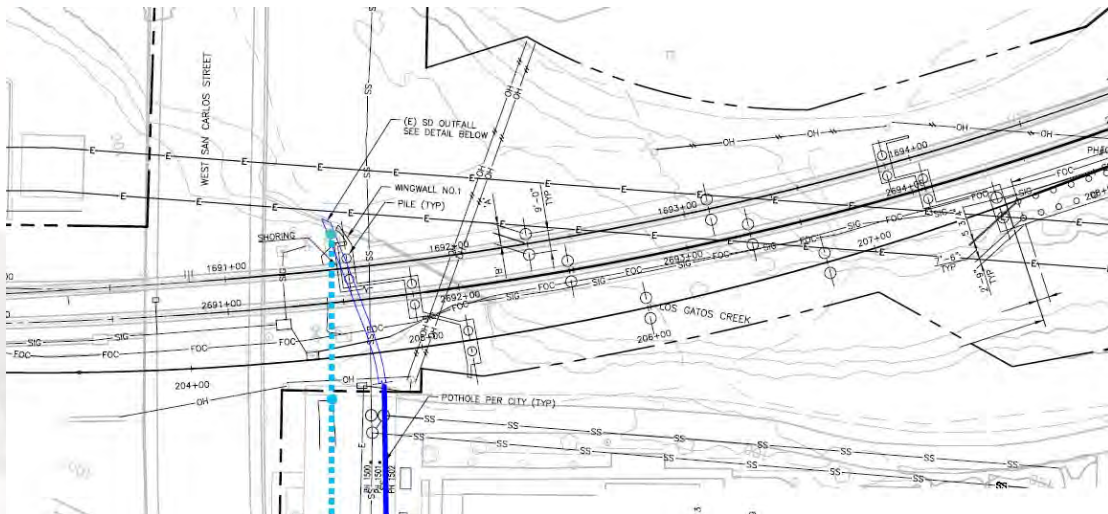
- **Phase I – Pre June 15 Work**
 - Staging, fencing, access roads, signal work
 - Tail Track abutment work
 - Retaining wall work
- **Phase II – June 15 through Oct 15 (Dry Season Window)**
 - Tail track bridge construction
 - Existing bridge demolition,
 - new Main Track 1 & 2 bridge construction
- **Phase III – Post Oct 15 Work**
 - Main Track 1 & 2 track and signal work

Utilities



Utilities

Storm Drain Relocation

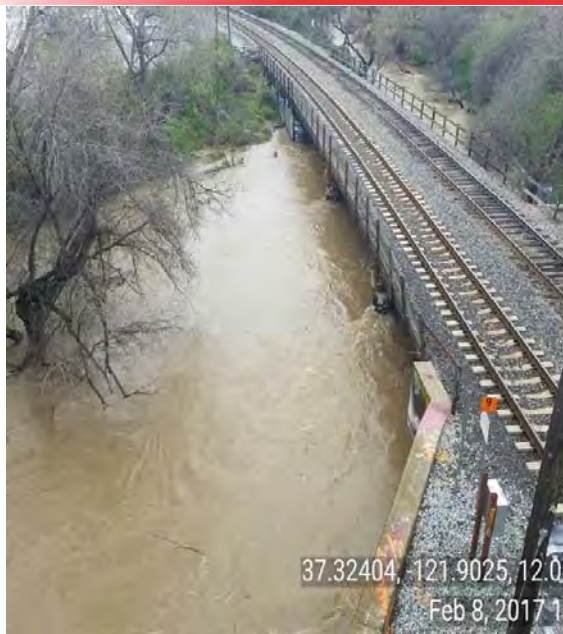




Limited Access



Unforeseen Conditions





Unforeseen Conditions

Creek Water Diversion & Fish Relocation



21



Unforeseen Conditions



22



Multi-party Coordination

Additional Coordination with

- JPB Operations
- UPRR & VTA Operations



Construction Status



Construction Status

- Tail Track Abutments and Bents Complete
- Retaining Wall 1 and 2 Complete
- Tail Track Bridge Girders Installation Complete
- Tail Track in Service – 2nd week of August
- MT-1 & MT-2 Bridge Demo – 3rd week of August
- New MT-1 & MT-2 Bridge & Tracks Construction Completion – Dec 2017



25



Questions

26