



Caltrain Planning Update

Board of Directors
November 3, 2016
Agenda Item 14



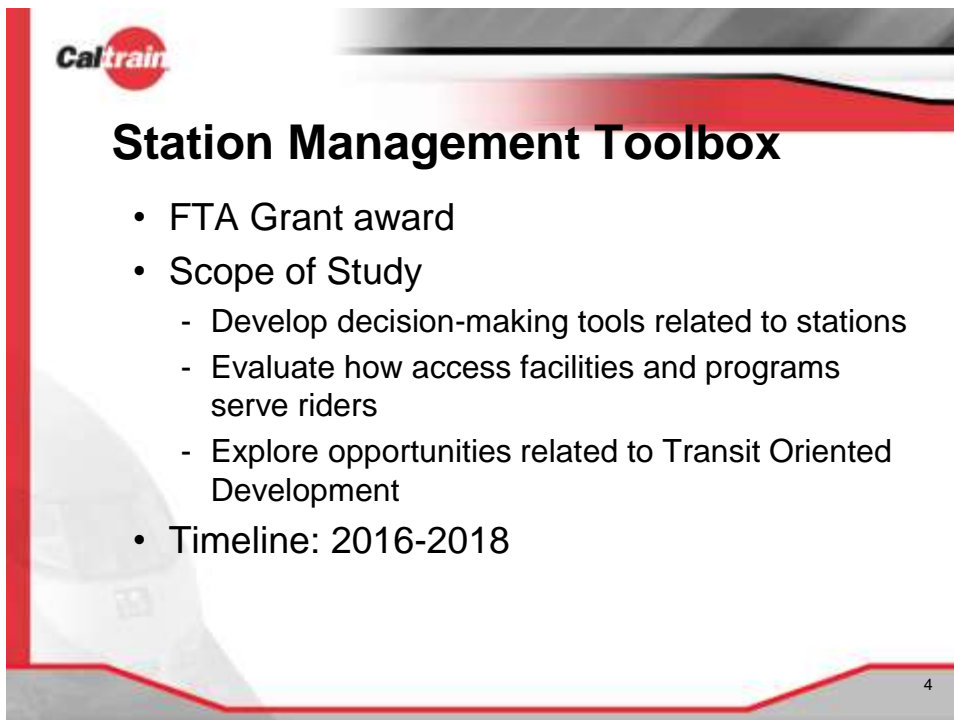
Planning Initiatives

- Several key policy and strategic planning studies underway that will:
 - Advance and support the Caltrain Strategic Plan
 - Develop policy or operating procedures to best support Caltrain service and riders



Caltrain Led Studies

3



Station Management Toolbox

- FTA Grant award
- Scope of Study
 - Develop decision-making tools related to stations
 - Evaluate how access facilities and programs serve riders
 - Explore opportunities related to Transit Oriented Development
- Timeline: 2016-2018

4



Corridor Use Policy

- Develop policy framework around the use of JPB owned property
- Scope of Study
 - Identify range of JPB property assets
 - Develop decision framework related to permitted near- and long-term uses and associated procedures
 - Evaluate financial and operational trade-offs
- Timeline: 2017-2018

5



Bike Parking Management Plan

- Caltrans Grant award
- Scope of Study
 - Study options and strategies for the management of bike parking at stations
 - Understand the market for bike parking
 - Explore opportunities for delivering improved parking including potential third party vendor partnerships
 - Engage the Bicycle Advisory Committee (BAC)
- Timeline: 2016-2017

6



Caltrain Fare Study

- Phase I
 - Technical studies to determine correct fare elasticities
 - Study current structure & passes as well as industry best practices
 - Use technical data, fully scope Phase II
- Phase II
 - Draft and evaluate fare policy
 - Public and stakeholder outreach
- Timeline: 2016 -2017

7



Short Range Transit Plan (SRTP)

- Required by MTC, Every Two Years
- Describes existing and planned services/facilities following guidelines set forth by MTC
- Current Caltrain SRTP(adopted Oct 2015) covers Fiscal Years (FY) 2015 – 2024
- Update will cover FY2016- 2026

8



Stakeholder Coordination

- Importance
 - Key projects or studies effect Caltrain long-range planning or strategic plans
 - Offer input early related to impacts to Caltrain service, facilities and/or riders
- Major Projects
 - Blended System
 - Station Area Plans etc

9



California High-Speed Rail Authority (CHSRA) Blended System

10



Blended Service Timeline

- 04/28/16 Latest Business Plan Adopted
- 05/09/16 Scoping for the EIR/EIS
 - Caltrain submitted Scoping letter
 - EIR/EIS technical work underway
 - Caltrain has been involved in meetings with CHSRA staff on various Blended corridor elements
 - Technical analysis is pending
- Early 2017, Draft EIR/EIS document anticipated for review and comment
- End 2017, Schedule for Final EIR/EIS Approval

11



Key Issues for Caltrain

- Passing track locations
- Blended system operations and prototypical schedule
- Configuration of stations
- Platform configuration at San Jose, Millbrae and 4th and King

12



Station Area Planning



San Jose Diridon Station



HSR Footprint/Study Area



San Jose Diridon Station

- Intermodal Working Group (SJ, VTA, HSR, Caltrain)
- Transportation Master Plan Study
 - Kickoff in 2017, looks at all modes of access to station relative to HSR and BART extension
- Station area TOD potential
- Governance Model Being Studied
 - Possible Interagency Working Agreement
 - Possible Joint Powers Authority for Station Area
- VTA Policy Advisory Board (PAB) Quarterly Updates
 - Raul Peralez, Caltrain Rep
- Timing: 2016 - 2018

15



Millbrae Intermodal Center



HSR Footprint/Study Area

16



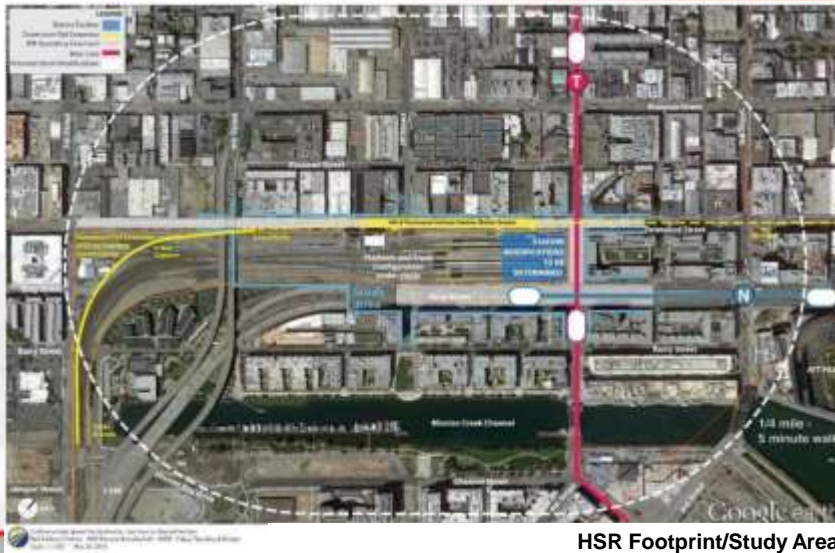
Millbrae Station

- Intermodal Working Group (Millbrae, CHSRA, SFO, CCSF and Caltrain)
- Comprehensive Access Study
 - Kickoff 2017, looks at all modes of access to station to ensure buses, bikes, peds and cars can all adequately access the station
- Transit Oriented Development
 - East side: BART TOD project (pending approval)
 - West side: Private TOD project proposed
- Studying HSR configuration and integration to station
- 2016-2019

17



San Francisco Station (4th & King)



HSR Footprint/Study Area

18



San Francisco Station

- North Terminal Study
 - FTA grant to evaluate options to modernize 4th & King station and railyard
 - Study operational needs and station/passenger facility
- Coordinating with TJPA and HSR regarding future planned improvements affecting 4th & King
- Underlying land owner interest in working with Caltrain on modernization efforts
- Coordinating with City & County of San Francisco regarding land use and transportation
- Timing: 2016-2019

19



Extend rail service to downtown San Francisco

(1.95 miles of construction)



20



Downtown Extension (DTX)

- Transbay Transit Center Substantial Completion Expected December 2017
- Transbay Joint Powers Authority (TJPA) working to develop DTX funding plan
 - Caltrain & HSR passenger facility surcharge proposed to generate revenues for capital costs. Caltrain studying the concept
 - TJPA proposes to complete development of regional funding plan by mid-2017
- TJPA working on securing additional funds to continue implementation
- Timing: DTX draft delivery schedule anticipates operations beginning in early 2026

21



Transbay Transit Center



22



Other Stakeholder Activities

- State Rail Plan Led by CalSTA
 - Planning of the integrated state rail network
- MTC Core Capacity Transit Study
 - Study of the capacity constraints in San Francisco
- CCSF RAB Study
 - City transportation study of unified vision for SoMa/Mission Bay including 4th & King railyard
- Other Station Area plans
- Grade Separation efforts
 - Integration with City efforts and County measures

23



Questions?

24