




Caltrain Levi's® Stadium Service

Board of Directors
July 3, 2014



Service Challenges

Seating Capacity

- Levi's® Stadium: 68,000
- AT&T Park: 42,000
- SAP Center: 18,000

Challenges

- Dual events at Levi's® Stadium & AT&T Park
- Weekday afternoon peak service

2



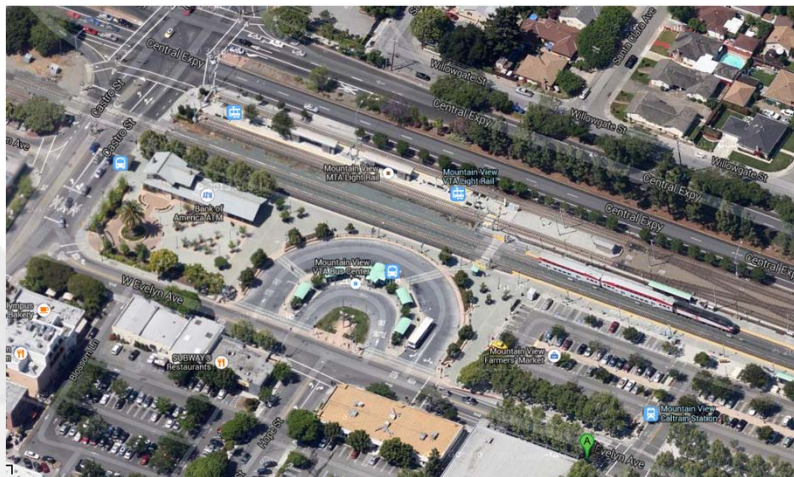
Levi's® Stadium Upcoming Events

Date	Time	Event	Comments
Saturday, 8/2	7:30 p.m.	Earthquakes soccer	
Sunday, 8/17	1 p.m.	49ers/Broncos	Exhibition; 1:05 p.m. Giants/Phillies
Sunday, 8/24	1 p.m.	49ers/Chargers	Exhibition
Friday, 8/29	4:30 p.m.	High school football	
		Double header	
Sunday, 9/14	5:30 p.m.	49ers/Bears	1:05 p.m. Giants/Dodgers
Sunday, 9/28	1:25 p.m.	49ers/Eagles	1:05 p.m. Giants/Padres
Sunday, 10/5	1:25 p.m.	49ers/Chiefs	
Friday, 10/24	7 p.m.	Cal Berkeley football	vs. Oregon
Sunday, 11/2	1:05 p.m.	49ers/Rams	
Sunday, 11/23	1:25 p.m.	49ers/Redskins	
Thursday, 11/27	5:30 p.m.	49ers/Seahawks	Thanksgiving Day
Friday, 12/5	tbd	PAC-12 championship	
Saturday, 12/20	1:30 p.m.	49ers/Chargers	
Tuesday, 12/30	7 p.m.	SF Bowl	College Bowl game
Sunday, 12/28	1:25 p.m.	49ers/Cardinals	

3



Mountain View Station

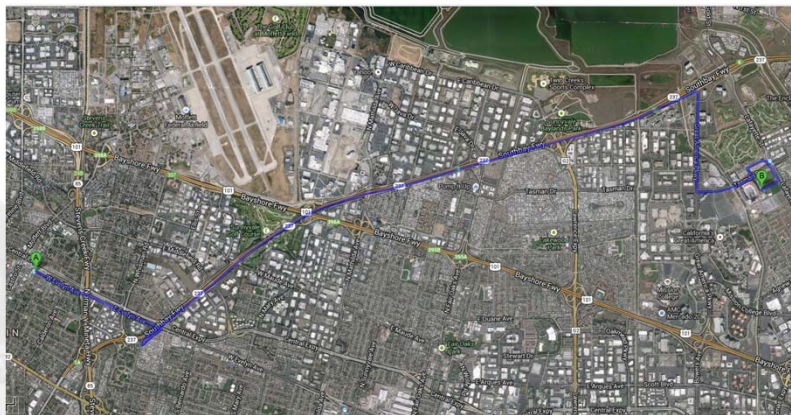


4



Mt. View Station to Stadium

8 miles, approximately 25 minutes on light rail



5



Train Capacity



Caltrain 800 – 900
passengers per train

VTA 300 – 450 passengers
per train



6

Caltrain

Caltrain Service

Timing and equipment positions

- 2 pre-game specials from San Francisco to Mountain View
- 2 post-game specials from Mountain View to San Francisco
- Additional trains on standby
- Maintain regular service

First Challenge – Sept. 14

- Dodgers vs. Giants 1:05 pm at AT&T
- Bears vs. 49ers 5:30 pm at Levi's® Stadium

7

Caltrain

Partnerships

Valley Transportation Authority

- Service Planning
- Station signage
- Information dissemination
- Safety & Security
- Joint Day Pass
- Dry Run held July 1

Levi's® Stadium

- Sharing assets, i.e. logos
- Communications

8




Station Ambassadors

Deployed for all major events

- Customer safety
- Direct customers between services
- Crowd control
- Service and fare resource

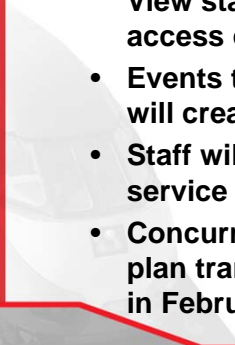


9



Summary

- Finalizing staffing & coordination with VTA for first event
- Focus is customer safety and service to meet demand
- Remain flexible to adjust service plans and Mountain View station operations to react to actual customer access choices
- Events that coincide at Levi's® Stadium and AT&T Park will create greatest risk to available resources
- Staff will update Board as we gain experience with new service plan
- Concurrently working with regional partners and NFL to plan transportation activities to support Super Bowl 50 in February 2016



10