




Los Gatos Creek Bridge Replacement / South Terminal Phase III Project

Board Meeting
January 9, 2014

The slide features a red background with a white Caltrain logo in the top left corner. The main title is centered in white text. The date and meeting information are in the bottom right. A faint image of a train is visible in the background.



Presentation Topics

- Overview
- Location and Scope
- Environmental Review
- Project Construction Schedule
- Community and Regulatory Outreach
- Tasks Accomplished and Next Steps

2

The slide features a white background with a red Caltrain logo in the top left corner. The title 'Presentation Topics' is in bold black text. Below it is a bulleted list of six topics. A small number '2' is in the bottom right corner. A faint image of a train is visible in the background.




Caltrain

Existing Conditions


- Owned by the Peninsula Corridor Joint Powers Board
- Built in 1935, exceeded its life expectancy
- Southern timber span was damaged by fire
- Existing bridge does not meet existing State and Federal safety and seismic standards.

Project will:

- Build a bridge compliant with current standards.
- Address the immediate rail safety need – critical safety project



4



Operational Limitations

- Each day 34 Caltrain trains use the bridge
- Lack of a tail track creates delays along corridor
- Existing bridge does not support planned service expansions at San Jose Diridon station, including electrification

Project will:

- Decrease system-wide delays
- Improve operations to and from the San Jose Diridon station
- Facilitate Caltrain electrification, which will reduce noise and vibration

5



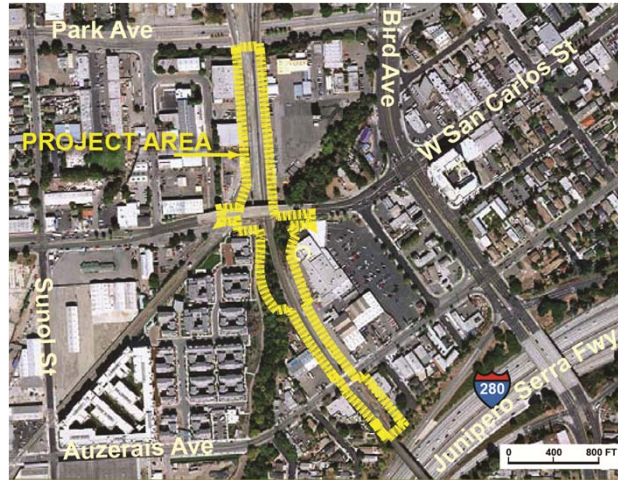
Location and Scope





Project Location

- In San Jose
- 2,000 ft. south of San Jose Diridon station
- Along Caltrain right of way



7



Project Scope

- Demolish existing bridge one track at a time
- Replace existing bridge with a new, wider bridge
 - Will meet current safety and seismic codes
 - Will require building a “shoofly” (third track) to maintain the two tracks in operations throughout construction
- Shoofly will be retained as a tail track to improve rail operations from San Jose Diridon station
- Combined project cost range \$40M - \$45M

8

A slide with a red background and a white Caltrain logo in the top left corner. The text "Environmental Review Process" is centered in black. Below the title is a bulleted list of items. A faint image of a train is visible in the background.

Environmental Review Process

- Includes analysis of existing conditions and potential impacts (short-term and long-term) and strategies to address the impacts
- **NEPA: Documented Categorical Exclusion, Section 7 Biological Resources Formal Consultation**
Lead Agency: Federal Transit Administration
- **CEQA: Initial Study/Mitigated Negative Declaration**
Lead Agency: Peninsula Corridor Joint Powers Board

10



Potential Impacts

Noise and Vibration Impacts:

- Temporary: **Only** during construction
- Permissible hours coordinated with City of San Jose
- Operational measures to ensure construction equipment will not exceed noise and vibration thresholds

Creek Impacts:


- Construction activities have the potential to impact the creek and its habitat
- Design and construction staging plan will minimize impacts



11



Project Construction Schedule



Construction Sequence


Creek Access:

- Limited to July through October (window)
- Requires special measures to protect creek habitat and species

Construction:

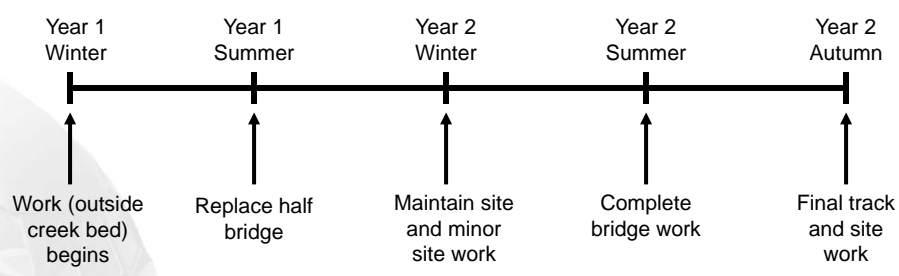
- Will take two windows to complete
- Perform work in creek **only** during window
- Other work outside window

13



Construction Schedule

Two-year construction duration



The diagram shows a horizontal timeline with five key milestones marked by vertical lines and arrows pointing to descriptive text below:

- Year 1 Winter:** Work (outside creek bed) begins
- Year 1 Summer:** Replace half bridge
- Year 2 Winter:** Maintain site and minor site work
- Year 2 Summer:** Complete bridge work
- Year 2 Autumn:** Final track and site work

14

The image shows the Caltrain logo in the top left corner. Below it, the text "Outreach Efforts" is written in a bold, black, sans-serif font. Underneath this heading is a bulleted list of eight items, each starting with a black dot. The background is white with a faint, semi-transparent image of a train. The text is in a black, sans-serif font. The number "16" is visible in the bottom right corner of the slide.

Outreach Efforts

- Publication of CEQA NOA/NOI in local newspapers
- Publication of Draft Initial Study and Mitigated Negative Declaration Environmental Document with the State Clearinghouse
- Two public comment periods on the IS/MND Document
- Two public meetings in San Jose
- Communications and meeting with residents of the Town Homes in San Jose
- Close coordination with the City of San Jose
- Outreach to relevant community organizations

16

The slide features the Caltrain logo in the top left corner. The background is a red gradient with a faint image of a high-speed train. The title "Tasks Accomplished" is centered in a large, bold, black, sans-serif font. Below the title is a bulleted list of tasks. The number "18" is located in the bottom right corner of the slide.

Tasks Accomplished

- Initiated preliminary engineering design (35%)
- Initiated NEPA & CEQA review processes
- Prepared and published Draft IS/MND
- Compiled and answered public comments
- Prepared and re-circulated Revised Draft IS/MND
- Received comments to re-circulated Draft IS/MND
- Conducted public meetings
- Coordinated regularly with regulatory agencies
- Coordinated regularly with the City of San Jose

18



Next Steps

- Compile and answer comments to revised Draft IS/MND
- Prepare Final IS/MND and Mitigation Monitoring & Reporting Program documents
- Request Board approval of the IS/MND and MMRP in February
- Complete the NEPA review process- Summer 2014
- Proceed with Engineering Design in coordination with relevant permitting regulatory agencies
- Continue coordination with the City of San Jose and the Trail project
- Provide public project updates

19



Questions?