



# San Francisco Station/Yard Reduction/Removal Feasibility Assessment

Board of Directors  
September 5, 2013



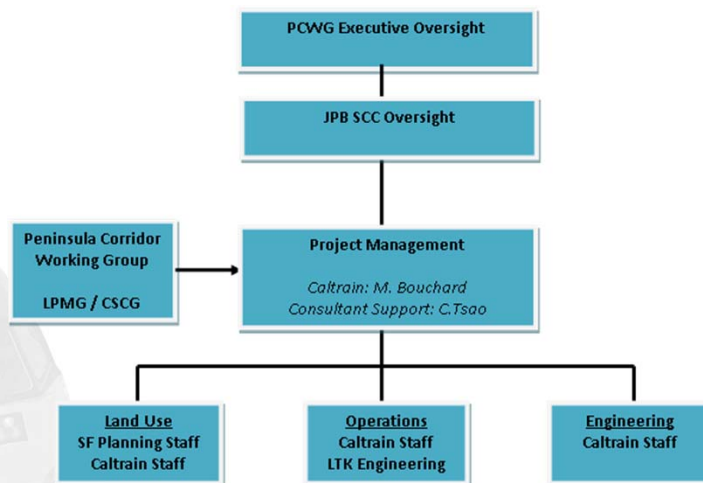
## Study Purpose

- San Francisco Requested / Funded
- Reducing/Removing San Francisco Station/Yard Feasibility
  - Support development
  - Enhance electrified Caltrain and blended system operations
- Next Steps Scope
  - Include in Peninsula Corridor Electrification Project (PCEP) EIR?
  - Conduct additional study / prepare separate environmental clearance?

## PCEP EIR Inclusion Criteria

- Minor delays in PCEP EIR schedule
- Modest changes to project description
- Relocation of functions within Caltrain ROW
- No substantial additional cost  
*(if substantial must have funding plan with concurrence from JPB)*
- No “unmanageable” public / environmental issues

## Study Organization



## Technical Evaluation

Key Tasks	Status
1. Objectives and Evaluation Criteria	✓
2. Service Plans and Facility Needs	✓
3. Scenario Development (SF station and Off-site)	✓
4. Scenario Analysis/Screen	In Progress

5

## Needed Functions

- Caltrain Electrified Service (by 2019)
  - Mixed-fleet service to all electric fleet
  - Peak-hour service: Up to 6 trains / ph / pd
  - Storage 10-11 trains
- Other Functions
  - Inspection / Light maintenance
  - Bike facility
  - Crew / Staff facilities

6

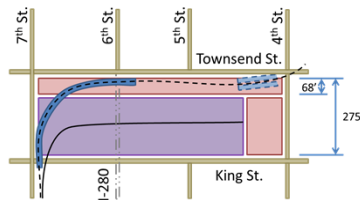
## Scenario Development

- SF Development Interest
  - Street level development along edges
  - Podium development over yard
- “Universe” to 3
  - 2 reduction options
  - 1 removal option (separate study)

7

## Option A: Reduced Footprint

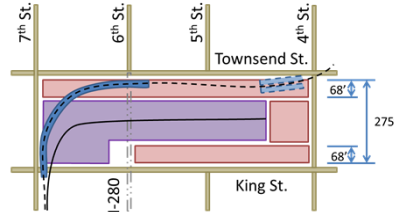
- Development
  - Street level along Townsend
  - Podium over yard
  - Street level along 4<sup>th</sup> Street with station integrated
- Efficient platform and track layout
- Potential to support needed functions without offsite location (need further analysis to confirm)
- Capital and O/M cost to be determined



8

## Option B: Reduced Footprint

- Development
  - Street level along Townsend & King
  - Podium over yard
  - Street level along 4<sup>th</sup> Street with station integrated
- Efficient platform and track layout
- Offsite location to support needed functions
- Capital and O/M cost to be determined



## Off-site Facilities/Yard

- Total Corridor Scan
- Location Considerations
  - Close distance to terminus
  - Access to mainline
  - Size and shape
  - Ownership
- Potential Locations and Functions:
  - Within City/County San Francisco
  - Storage and light maintenance
  - Other facilities

## Next Steps

- Complete Analysis
  - Capital cost
  - Operations & Maintenance costs
- EIR Inclusion Criteria Screening
- Next Month
  - Staff recommendations
  - Present to policy makers

## Questions