



Caltrain Modernization Program



Prepared for: Stakeholder outreach meetings
Prepared by: Caltrain staff
February 2012





Presentation

- **Blended System Planning Update**
- **Early Investment Proposal**






Blended System Planning Update




Context

- **HSR approved by voters**
- **Caltrain corridor selected to support HSR**
- **Both systems need electrified corridor**
- **Caltrain and HSR partnership**
- **Combine resources to modernize corridor**



HSR Original Plan

- **“Full Build” project in peninsula**
 - 4 track system
 - Fully grade separated
- **Local rejection**
- **HSR “Full Build” design & project environmental activities in peninsula on hold**



Peninsula Vision

- **Elected officials call for “blended system”**
- **What is it?**
 - Electrified railroad from SJ to downtown SF
 - Support both Caltrain and HSR
 - Maximize use of existing tracks
- **Why?**
 - Minimize community impact
 - Lower project cost
 - Advance project delivery



Is the Blended System Feasible?

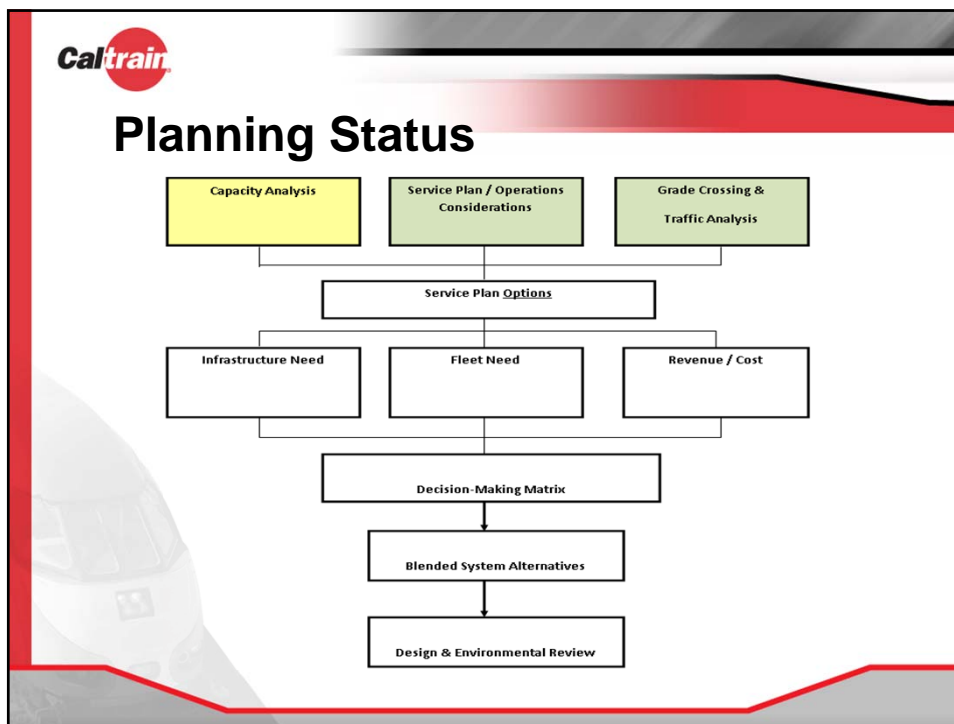
- **Multiple considerations**
- **1st address operational feasibility**
- **Computer simulation of existing railway**
 - Existing mainline tracks
 - Electric system with advanced signal system
 - 3 HSR stations
 - Passing tracks



Key Findings

- **Blended system concept has merit**
- **Potential: Up to 10 trains / hour / direction**
- **Speeds up to 79mph and 110mph**


# of Trains	Without Passing Tracks	With Passing Tracks
Caltrain	6	6
HSR	2	4






Context

- **HSR Draft Business Plan**
 - Includes blended system concept
 - Discusses early investment in existing rail systems
- **Input to HSR Revised Plan**
 - Identification of early investment projects
 - Southern CA projects defined
 - Bay area projects being defined



Early Investment Parameters

- **Located in HSR SJ to SF segment**
- **Support Caltrain modernization & blended system**
- **Do not compromise local planning process**
- **Short-term timeframe**
- **Funding: Prop 1A and match (up to \$2B?)**



Draft Proposal

- **Vision: Blended System to downtown SF**
- **Early Investment**
 - Electrified Caltrain service
 - Caltrain/HSR transfer at Diridon
- **Recommended Priority Projects**
 - Advanced signal system (\$231M)
 - Caltrain electrification (\$785M)
 - Electric trains (\$440M)
 - Infrastructure upgrade (TBD)
 - Rail crossings upgrade (TBD)
 - SF / SJ (TBD)



Draft Proposal, cont.

- **Additional Investment**
 - HSR one-seat ride LA to SF
 - Cost and funding TBD
- **Key Projects**
 - DTX
 - HSR and Caltrain system integration
 - Infrastructure upgrade
 - Stations upgrade
 - Rail crossings upgrade
 - Passing Tracks TBD
 - Storage and Maintenance Facility TBD



Outreach

- **City/County staff coordination**
- **Transportation agency coordination**
- **Public meetings**
 - CC meetings as requested
 - SM Rail Corridor (February 29th)
 - PCC (March 2nd)



Upcoming Transportation Meetings

- **JPB meeting – March 1st**
- **MTC meeting – March 28th**
- **HSR Board meeting – April 5th**

