



# FY2012 Preliminary Capital Budget

May 5, 2011



## Outline

- Review Budget Goals
- Overview of the FY2012 Capital Budget
- Capital Program / Project Highlights
- Program Costs
- Funding Sources
- Next Steps

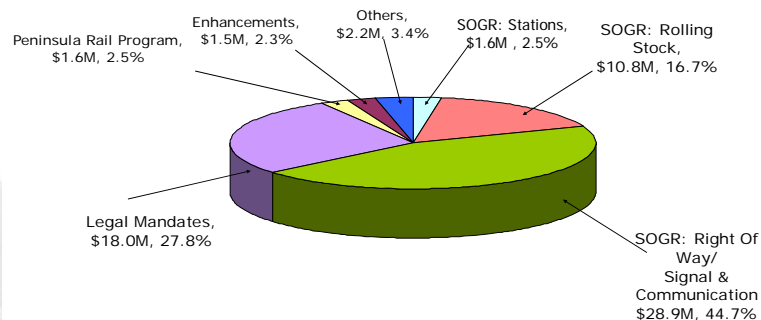


## Review Budget Goals

- Invest in infrastructure and equipment improvements to maintain system in a state of good repair
- Invest in the rehabilitation and replacement of components for the rail vehicles to ensure fleet availability
- Complete Caltrain PTC Development Plan (PTCDP) for Caltrain PTC system project (previously called Communication Based Overlay Signal System (CBOSS)) to meet a Federal mandate by December 31, 2015
- Continue system safety improvements
- Continue work to coordinate planning and design efforts for the high-speed rail system in the Caltrain corridor with the California High-Speed Rail Authority



## Overview of FY2012 Capital Budget Total: \$64.6 million





## Capital Program/Project Highlights

### State of Good Repair: Stations

- Systemwide Station State of Good Repair
  - Estimated Cost: \$9.4 million
  - Proposed FY2012 Funding: JPB Members - \$0.4 million



## Capital Program/Project Highlights

### State of Good Repair: ROW & Signal Program

- Final design efforts for the Los Gatos Creek Bridge Replacement Project
  - Estimated Cost: \$21.2 million
  - Proposed FY2012 Funding:
    - FTA - \$4.0 million
    - JPB Members - \$1.0 million

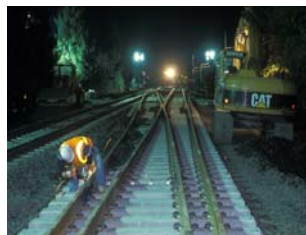




## Capital Program/Project Highlights

### State of Good Repair: ROW & Signal Program

- Maintain the current infrastructure in a state of good repair by completing the necessary track and structures rehabilitation
  - Proposed FY2012 Funding:
    - FTA - \$5.6 million
    - AB664 - \$0.4 million
    - JPB Members - \$1.0 million



## Capital Program/Project Highlights

### State of Good Repair: ROW & Signal Program

- Replace two JPB-owned roadway bridges at 22<sup>nd</sup> & 23<sup>rd</sup> streets
  - Estimated Cost: \$14.8 million
  - Proposed FY2012 Funding:
    - Federal Highway Bridge Repl. Program - \$10.4 million
    - SF - \$1.4 million





## Capital Program/Project Highlights

### State of Good Repair: ROW & Signal Program

- South Terminal Improvement Program - Phases II & III: addition of 4<sup>th</sup> track from CEMOF to San Jose, and 3<sup>rd</sup> track from San Jose to north of I-280. Work to start in FY2012 includes preliminary engineering and environmental assessment
  - Estimated Cost: \$67.8 million
  - Proposed FY2012 Funding: \$2.0 million
    - Prop 1B - \$2.0 million



## Capital Program/Project Highlights

### State of Good Repair: Rolling Stock

- Rehabilitate and overhaul components of the current fleet of passenger cars and locomotives to ensure vehicles will operate reliably through the end of their useful lives
  - Proposed FY2012 Funding:
    - Federal - \$1.1 million
    - Prop 1B - \$3.0 million
    - JPB Members - \$6.6 million





## Capital Program/Project Highlights

### Legal Mandate

- Funding for Positive Train Control to meet Federal Communications Commission mandates by December 2015
  - Estimated Cost: \$219.0 million
  - Proposed FY2012 Funding:
    - FRA - \$16.0 million
    - Prop 1B - \$2.0 million



## Capital Program/Project Highlights

### Enhancements

- Install cameras on cab cars and locomotives to provide a deterrent against terrorism, identify problem locations and serve as a post-incident investigative tool
  - Estimated Cost: \$1.5 million
  - Proposed FY2012 Funding:
    - CTSGP - \$1.0 million



## Capital Program/Project Highlights

### Peninsula Rail Program

- Funding for ongoing program management and oversight, and to provide for planning and design support
  - CHSRA - \$1.5 million
  - JPB Members - \$0.15 million

### Support for the Caltrain Capital Program

- Project Development - \$0.75 million
- Project Management - \$0.50 million
- Contingency - \$0.90 million



## FY2012 Program Costs

| Program   | FY2012 Budget         | % Share     |
|---|-----------------------|-------------|
| State of Good Repair: Station                               | \$1.6 million         | 2.5%        |
| State of Good Repair: Right of way; Signals & Communication | \$28.9 million        | 44.7%       |
| State of Good Repair: Rolling Stock                         | \$10.8 million        | 16.7%       |
| Legal Mandate   | \$18.0 million        | 27.9%       |
| Peninsula Rail Program                                      | \$1.6 million         | 2.5%        |
| Enhancements  | \$1.5 million         | 2.3%        |
| Support   | \$2.2 million         | 3.4%        |
| <b>Total</b>  | <b>\$64.6 million</b> | <b>100%</b> |



## FY2012 Funding Sources

| Fund Category                                     | \$ Amount             |
|---|-----------------------|
| Federal Grants                                    | \$39.6 million        |
| State and Regional Grants                         | \$9.5 million         |
| Other   | \$2.8 million         |
| JPB Member Agency Contribution - <u>Requested</u> | \$12.7 million        |
| <b>Total</b>                                      | <b>\$64.6 million</b> |



## Next Steps

- **Continue to work with JPB member agencies on their contributions**
- **Bring recommendation for final budget back to the Board in June**





# FY2012 Preliminary Capital Budget

May 5, 2011