



South San Francisco Station Improvement Project

Pre-Construction Meeting

June 22, 2017

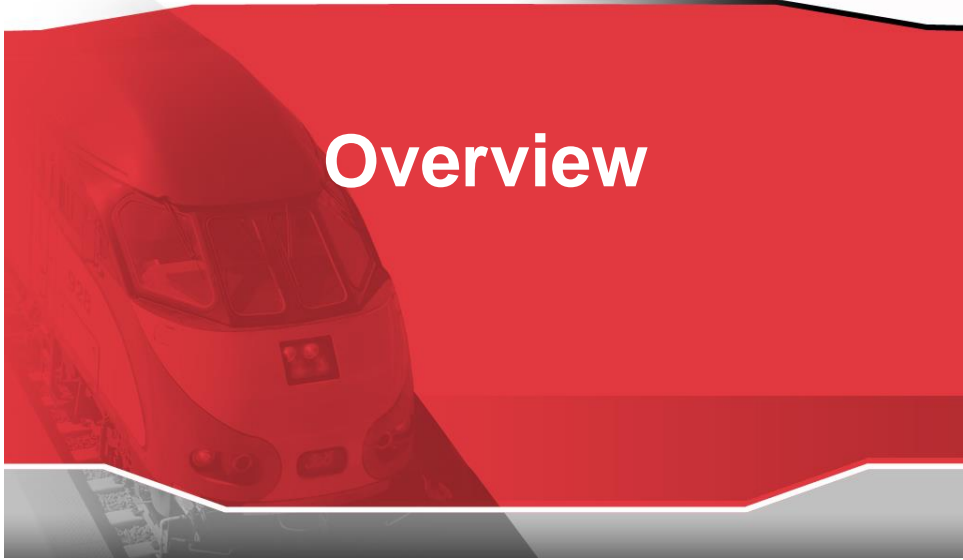


Agenda

- I. Overview
- II. Project Description
- III. Project Benefits
- IV. Project Construction
- V. Next Steps
- VI. Questions



Overview



Project Location





South San Francisco Station

- 510 daily boardings
- 46 daily Caltrain stops
- Holdout Rule
- ADA Accessibility

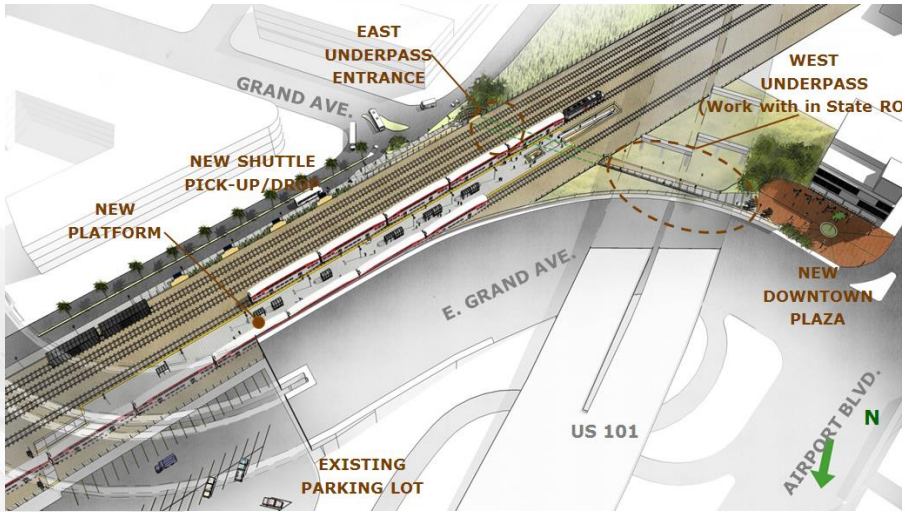
5



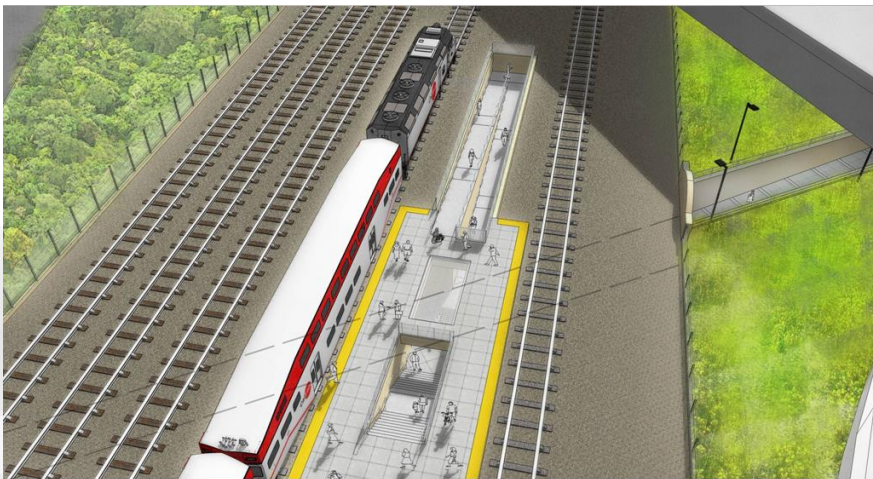
Project Elements

- Center Board Platform
- Pedestrian Underpass
- Track and Signal Work
- Removal of Holdout Rule
- Shuttle Pick-up/Drop-off

6



7



8



Project Benefits

- Removal of Hold Out Rule
- Accessibility Improvements
- Increased Pedestrian Access
- Safety
- Fewer system-wide delays

9



Schedule

Activity	Date
Bid and Award	April – August 2017
Utility Relocation Work	September 2017
Begin Construction	November 2017
Finish Construction	Summer 2019

10



Potential Impacts during Construction

Noise and Vibration Impacts:

- Temporary: Only during construction
- Construction equipment and procedures selected to ensure noise and vibration impact thresholds are not exceeded
- Additional noise mitigation measures will be implemented



Work Hours

- Majority of construction activities will take place Mon-Fri during the day
- Certain construction activities require work to be completed at night or on weekends when there is reduced or no revenue train service
- JPB will notify community in advance of nighttime and weekend work



Next Steps

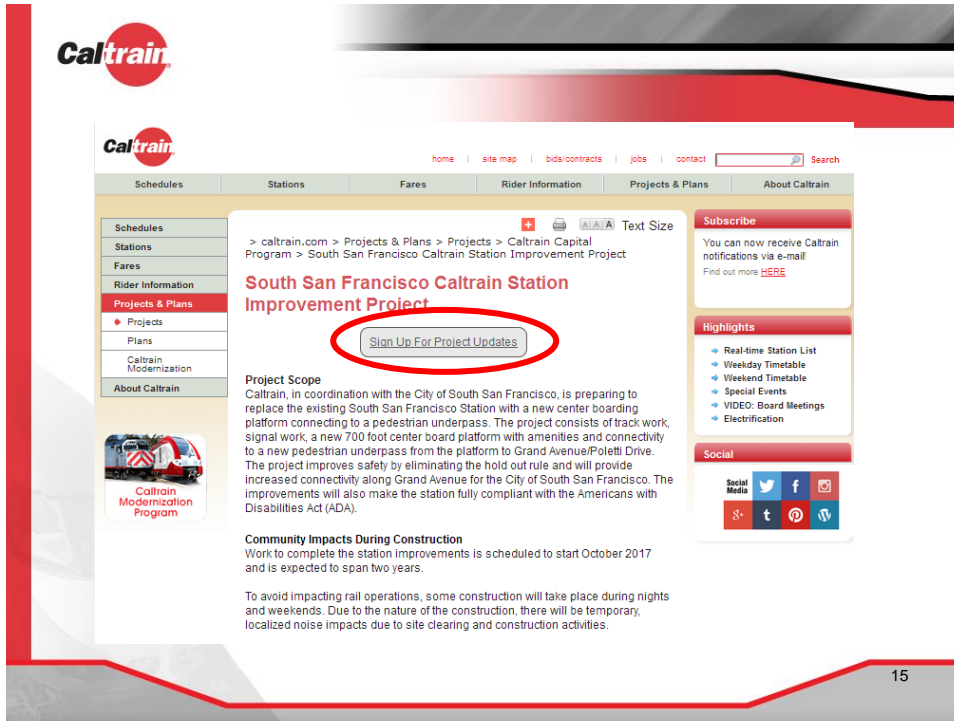
- August 2017: Award Construction Contract
- October 2017: Additional Community Meeting
- November 2017: Begin Construction

13



Public Outreach & Community Engagement

- Dedicated Web page:
www.caltrain.com/ssfstation
- Construction Outreach Hotline: 650.508.7726
- Regular Updates and Public Meetings
 - Pre-construction and during construction
 - Tied to critical milestones/project decisions
 - Mail/Email/Website



Caltrain

home | site map | bids/contracts | jobs | contact Search

Schedules | Stations | Fares | Rider Information | **Projects & Plans** | About Caltrain

Schedules
Stations
Fares
Rider Information
Projects & Plans
Projects
Plans
Caltrain Modernization
About Caltrain

Caltrain Modernization Program

Text Size

> caltrain.com > Projects & Plans > Projects > Caltrain Capital Program > South San Francisco Caltrain Station Improvement Project

South San Francisco Caltrain Station Improvement Project

[Sign Up For Project Updates](#)

Project Scope
Caltrain, in coordination with the City of South San Francisco, is preparing to replace the existing South San Francisco Station with a new center boarding platform connecting to a pedestrian underpass. The project consists of track work, signal work, a new 700 foot center board platform with amenities and connectivity to a new pedestrian underpass from the platform to Grand Avenue/Poletti Drive. The project improves safety by eliminating the hold out rule and will provide increased connectivity along Grand Avenue for the City of South San Francisco. The improvements will also make the station fully compliant with the Americans with Disabilities Act (ADA).

Community Impacts During Construction
Work to complete the station improvements is scheduled to start October 2017 and is expected to span two years.

To avoid impacting rail operations, some construction will take place during nights and weekends. Due to the nature of the construction, there will be temporary, localized noise impacts due to site clearing and construction activities.

Subscribe
You can now receive Caltrain notifications via e-mail. Find out more [HERE](#).

Highlights

- Real-time Station List
- Weekday Timetable
- Weekend Timetable
- Special Events
- VIDEO: Board Meetings
- Electrification

Social

g+ t p w

15



Caltrain

Construction Notices

South San Francisco Station Improvement Project

Dear Caltrain Neighbor,

Please join us for a community meeting regarding the South San Francisco Station Improvement Project. Caltrain, in cooperation with the City of South San Francisco, is preparing to replace the existing South San Francisco Station with a new center board platform that connects to a new pedestrian underpass.

The station improvements consist of new track and signal work, construction of a 700 foot center board platform with amenities, shuttle pick-up/drop-off area along Poletti Drive, and a pedestrian underpass that crosses underneath the railroad tracks. The project improves safety by allowing multiple trains to occupy the station concurrently and improves connectivity between Grand Avenue and Poletti Drive. The improvements will also make the station fully compliant with the Americans with Disabilities Act (ADA).

Meeting Information
Thursday, June 22 at 6:30 p.m.
City Hall Annex Conference Room
315 Maple Avenue
South San Francisco, CA 94080

The meeting will include a presentation detailing the project scope and tentative construction schedule. For more information on the project, please visit www.caltrain.com/ssfstation.

Example of mailed notice

16



Contact

Construction Information	Service Information
Construction Outreach Hotline Phone: 650.508.7726	Customer Service Department Phone: 800.660.4287
1250 San Carlos Avenue PO Box 3006 San Carlos, CA 94040-1306	
www.caltrain.com/ssfstation	



Questions