



San Mateo Bridges Replacement Project

Replacement of Four 100-Year-Old Rail Bridges

Community Meeting

Nov. 14, 2013

Overview

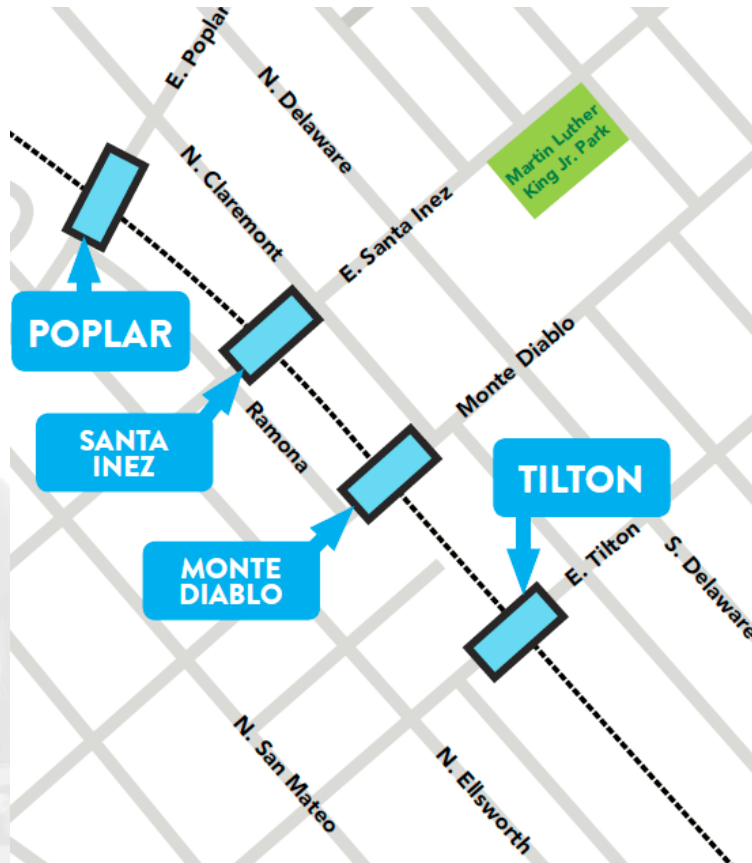
- **The Project**
- **Advanced Site Prep.**
- **Bridge Replacement**
- **Next Steps**

Project Scope

- Replace and raise four existing three span bridges with new modern single span bridges
- Bridge design requires construction of higher berm supported by new retaining walls



Project Area



Replace Four 100 Year Old Bridges

Background

Why do these bridges need to be replaced?

- Rapidly aging rail bridges
- Do not meet current seismic safety standards
- Replacement needed to ensure continued safe rail operations
- Increased height requirements for vehicle clearance

Timeline

- **Advanced Site Prep**
 - Removing trees
 - Work to begin in January

- **Main Contract**
 - Replace bridges, and raise tracks
 - Work to begin late summer of 2014



Advanced Site Prep.



Advanced Site Prep.

- **New bridges require that tracks be raised → raising the tracks requires removing the vegetation**
- **Clear trees in conflict with the project**
- **Separate contract allows for work to be performed by specialized contractor**

Scope

- **Vegetation removal between E. Bellevue and the Caltrain Station.**
- **Approx. 100 trees to be removed.**
- **All trees to be removed are on Caltrain property**

Mitigation

- **Working closely with City of San Mateo on mitigation**
- **Stumps/brush/lower vegetation to remain in place through winter to ensure slope stability**
- **Vector control part of contract**

Construction

- **Work will begin January**
- **Start at Tilton Ave; progress North**
- **Monday – Friday, 7:00am-7:00pm**
- **Parking restrictions will be required and posted at each bridge**

Construction

- **Crew: 8 men with hand tools and chainsaws**
- **Equipment on Caltrain ROW: Bobcat/mini-excavator**
- **Equipment on street: Chipper, Dump Trucks, and Crane**
- **A Crane will assist with the largest trees.**



Bridge Replacement (Main Contract)



Bridge Replacement

- **Design is at 65%**
- **Design complete by early next year**
- **Construction will begin summer 2014**
- **Those directly impacted will be contacted individually by Caltrain**

Project Elements

- Utility relocations
- Construct retaining wall
- Build earthen berm
- Raise tracks
- Roll in new bridges
- Final paving and street improvements



Construction

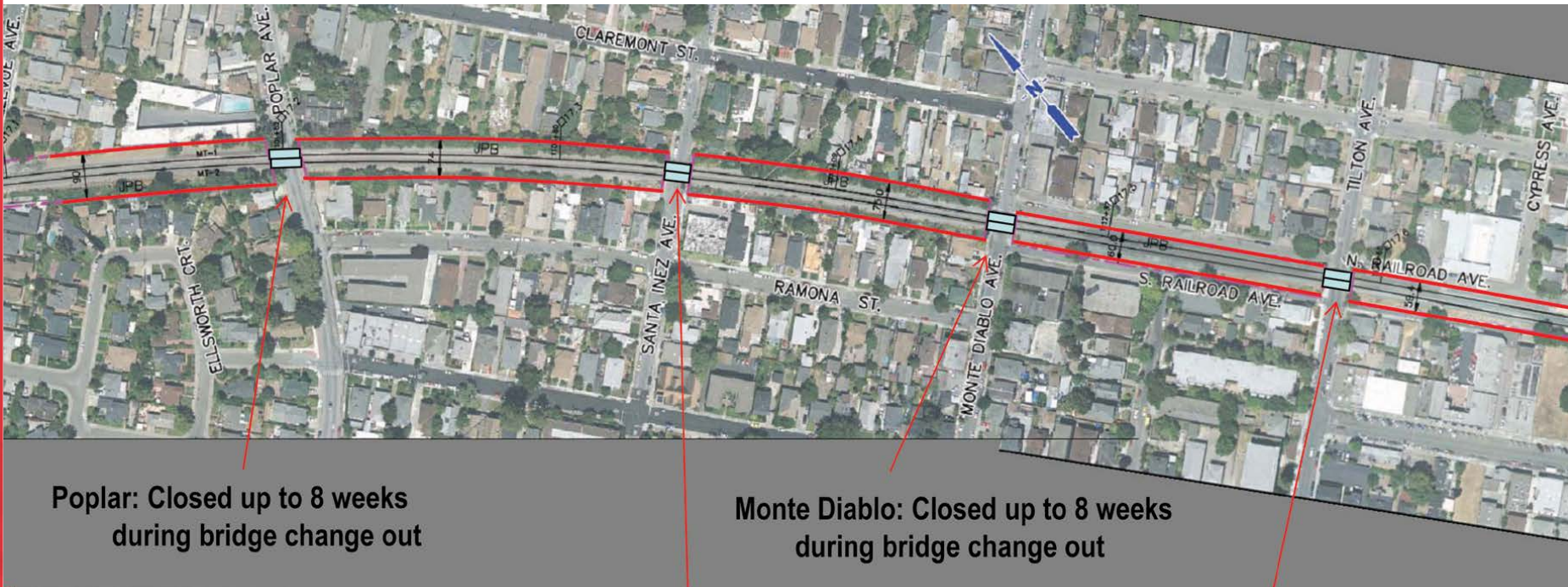
- **Summer 2014 to summer 2016**
- **Lane closures and some parking restrictions during construction of berm**
- **Most work 7 AM to 7 PM Mon – Fri**
- **Some work (rail and bridge roll ins) at night and on weekends.**

Roll In/Roll Out Of Bridges



- New bridge assembled on site
- Roll in/roll out during a single weekend
- Old bridge demolished after roll in

Temporary Road Closures – late 2015 into 2016



**Poplar: Closed up to 8 weeks
during bridge change out**

**Monte Diablo: Closed up to 8 weeks
during bridge change out**

**Santa Inez: Closed up to 8 weeks
during bridge change out**

**Tilton: Closed up to 8 weeks
during bridge change out**

Community Input

- **Community meeting - May 2, 2013**
- **Public Works Commission – July 10, 2013**
- **Notification Process**
 - Notices/mailers
 - Door-to-door communication
 - Write-up in HANCSM newsletter
 - Special project Web page www.caltrain.com/SMBridges
 - Social media (Facebook & Twitter)
 - New online discussion group (Google)
 - Responses to individual public requests and questions

Next Steps

- **Finalize design**
- **Complete site clearing/vegetation removal**
- **Award of construction contract for Main Contract**
- **Caltrain will be contacting those directly impacted**
- **Next community prior to construction**

More Info

- www.caltrain.com/SMBridges
 - Subscribe to updates
- **Google Groups - caltrainsmbridges**
- **Email: smbridges@caltrain.com**
- **Construction Outreach Hotline:
650.508.7726**



Questions ?

