



Connection

The Newsletter for Caltrain Riders

Winter 2009

Schedule Change & New Ticket



Caltrain will adjust the timetable and introduce a new 8-ride Ticket effective March 2.

Timetable Change

On weekdays, southbound evening Trains 192, 194 and 196 will depart San Francisco 10 minutes later than the current schedule. All southbound weekend trains, with the exception of Train 454, will depart 15 minutes later than the current schedule. Times for all subsequent stops will be changed accordingly.

The timetable is being adjusted to allow for construction along the right of way.

continued on page 4

Caltrain Practices Being Green

In an effort to improve the quality of life for its customers and neighbors, Caltrain is practicing greener methods in its day-to-day business operations.

Caltrain has done a number of things over the last few years to become more environmentally sensitive, including recovering and recycling train wash water, and rebuilding or replacing older engines with ones that have lower emissions, said Chief Operating Officer Chuck Harvey.

Since opening its Centralized Equipment Maintenance & Operations Facility in 2007, Caltrain has been able to recover from 80 to 90 percent of the water it uses to wash the trains.

"The water recycles back into the treatment

plant so we don't waste it," said Harvey.

People working or living near the San Francisco station or the San Jose maintenance facility may not be aware that Caltrain has expanded its ground power and compressed air systems at these facilities. Before this project was completed, crews had to rely on the locomotives' engines for power while performing routine maintenance work on trains. Now, crews can plug into 480 volts of ground power, allowing the locomotives to be shut off.



Water from the train washer is recovered and recycled.

In addition to reducing noise and pollution, this practice has resulted in a significant reduction in fuel consumption. At the

continued on page 4

Bike Capacity to Increase in Spring

The Caltrain Board of Directors took another incremental step towards improving its already industry-leading onboard bicycle program by approving a plan to increase overall capacity by 27 percent.

Under the plan, approved at the board's Feb-

ruary meeting, each train will have space designated for an additional eight bikes. Caltrain operates two types of train equipment: gallery and Bombardier. The gallery train sets will increase to 40 slots and the Bombardier will have 24 bike spaces.

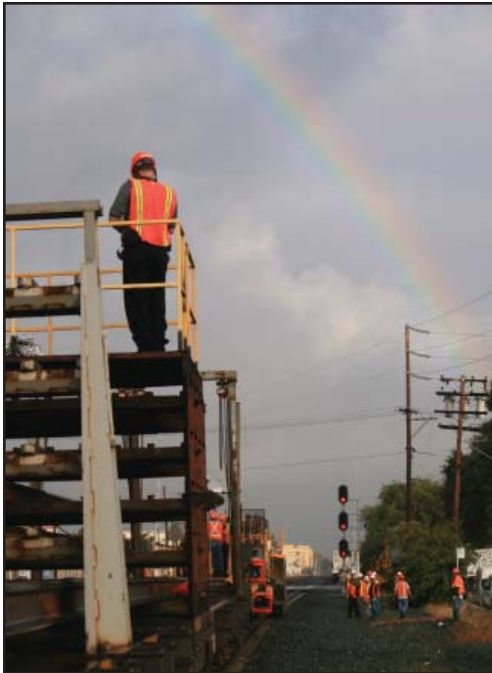
The action came after Caltrain staff presented a number of options for increasing bike capacity while also taking into consideration the reliable operation of the train service that serves more than

continued on page 3

Workers Off-load 80,000 feet of New Rail

Caltrain recently unloaded a shipment of continuous welded rail in five locations along the right of way.

Most modern railways use continuous welded rail, sometimes referred to as ribbon rail, which has been welded together into one 1,600-foot length. Caltrain unloaded 50 lengths of continuous welded rail for a total of 80,000 feet.



A rainbow emerges as Caltrain workers unload rail.



A special car was needed to unload the 1,600 lengths of rail along the corridor.

Because there are few joints, this form of rail is very strong, gives a smooth ride and needs less maintenance. The rail was manufactured in Pueblo, Colo. and shipped on a special train to Caltrain.

The rail will be used for upcoming construction projects, such as the renovation of the Santa Clara station and the replacement of four bridges in San Mateo, as well as routine maintenance work.



This form of rail is very strong, gives a smooth ride and needs less maintenance.

Mobility Device Policy Expands at Caltrain

Caltrain recently expanded its mobility device policy to include Electric Personal Assistive Mobility Devices. EPAMDs are more commonly known by the trade name Segway.

The U.S. Department of Transportation classifies EPAMDs as mobility devices for people with disabilities. As a safety precaution, people will be required to obtain a permit to bring the devices on the train. Caltrain

will begin accepting applications for permits March 15.

Conductors will use the same equipment to board EPAMDs that is used to board wheelchairs. Many trains have an onboard wheelchair lift, but the newer cars use the mobile wheelchair lift or the accessible ramp, both of which are located on the station platform. The Millbrae, Hillsdale, Palo Alto, Mountain View and

San Jose Diridon stations have accessible ramps. For other trains at these stations and at other accessible stations, riders with a valid EPAMD permit should wait at the blue Boarding Assistance area (marked with the international wheelchair symbol) for conductor assistance.

For an application, or for more on taking an EPAMD on Caltrain, call 650.508.6202.

Burlingame Museum Opens at Caltrain Station

Local history buffs now have a place to go when they want to learn about their cities' past - the Burlingame-Hillsborough History Museum.

The museum, which is located inside the Burlingame Caltrain Station's old waiting room, opened to the public last fall. Since then, hundreds of people have visited the museum to see the "Planes, Trains and Automobiles" exhibit currently on display, said Russ Cohen, president of the Burlingame Historical Society.

According to Cohen, it is the historical society's goal to preserve Burlingame's and Hillsborough's history and to educate those who have a desire to find out more. The society is the sole repository for Burlingame and Hillsborough history.

Since its inception in 1975, the society has been quietly preserving artifacts, documents, photographs, films and audio tapes to help tell the story of the community's rich and diverse past. Cohen said it has more than 125,000 pieces in its collection, including photos of Teddy Roosevelt's visit to the area in 1903 and Miss Burlingame's wedding dress from 1935.

"This is why we wanted to open the museum and share all that material," he said.



Photo courtesy of the Burlingame Historical Society

The Burlingame-Hillsborough History Museum, which opened last fall, is located at the Burlingame Caltrain Station.

Several years ago, Caltrain agreed to allow the society to open a museum at the station, which was built in 1894 and is on the National Register of Historic Places and designated a State Historic Landmark.

Cohen said the museum is a great place for family weekend outings, with many children stopping by with their parents and grandparents.

"Every child should learn about their hometown and how it came to be so that when they walk down the street, they have a sense of place," Cohen said.

Although the museum is in a 19th century building, Cohen said he would like to see 21st century technology built into exhibits in the future.

"We would like to do something interactive because we want people to keep coming back," Cohen said.

The Burlingame-Hillsborough History Museum is open from 1 p.m. to 4 p.m. Sundays. There is no admission fee, but the Historical Society accepts donations. Visit www.burlingamehistorical.org.

More Bike Spaces to be Added on all Trains

continued from page 1

41,000 riders each weekday. Bike riders make up approximately 2,400 of those customers.

The board also supported staff's recommendation to continue the "active, engaging and passionate" dialogue with the bicycle community, which includes formalizing the role of the bicycle advisory committee.

It could be mid-spring before bike riders see additional capacity as Caltrain staff seeks funding for the estimated \$200,000 project and then commences with removing seats and installing the bike racks. In addition to increasing capacity, Caltrain also committed to strive to assign two bike cars to peak-period trains as operations allow.

Caltrain first welcomed bikes onboard trains in 1992 with a pilot program that allowed four bikes on a few trains.

Over the years, the rail agency has made incremental improvements in capacity, resulting in the current standard of 16 bikes per Bombardier train and 32 per gallery set.

Palo Alto Construction Nearly Complete

The \$15 million improvement project at the Palo Alto Caltrain Station marked a milestone recently with the opening of the northern end of the new boarding platforms and a new pedestrian underpass.

As part of the project to improve safety at the popular station, the at-grade crossing for customers with mobility impairments has been removed and replaced with a safer, pedestrian underpass that allows people who use wheelchairs and other mobility devices to get easily from one platform to another.



The California Avenue station features a new pedestrian underpass.



The Palo Alto station received new boarding platforms as part of the multi-million dollar improvement project.

The renovations are part of a larger project to improve both Palo Alto stations. At the California Avenue station, the narrow center-boarding platform has been replaced with two outside boarding platforms. A pedestrian underpass also was built.

Work at the California Avenue station was completed at the end of February, and Caltrain hosted a ribbon cutting ceremony to celebrate the completion.

Schedule Changes/New Ticket Debut March 2

continued from page 1

8-ride Ticket

The 8-ride Ticket will replace the current 10-ride Ticket. The new ticket has been designed so that it only needs to be stamped, not cut, in the validators. This will help increase the reliability of the validator.

The 8-ride Ticket retains many of the features of the 10-ride Ticket, including the approximately 15 percent discount. Customers will still be able to purchase a monthly parking permit when they buy two 8-ride tickets.

In order to accommodate the stamping mechanism in the ticket

validators, the 8-ride Ticket is in two parts, each good for four rides. Each ticket has two validation spaces on the front and the back.

Ten-ride tickets purchased before March 2 will be honored for the full 60 days from the purchase date. Ten-ride tickets will not be honored after April 29. Soon after that, the cutters on the ticket validators will be disabled.

A video that shows how to use the new ticket is posted on the Caltrain Web site at www.caltrain.com. A brochure also is available on trains.

Green Methods

continued from page 1

San Francisco station alone, monthly fuel consumption has been reduced nearly 10,500 gallons.

Caltrain's industry-leading bicycle program, which allows bikes on-board all trains, also is worth noting.

In the future, electrifying the rail system will result in a reduction in overall emissions of nearly 85 percent.

Since electric-operated trains are more efficient than Caltrain's current diesel-electric trains, this also would result in a significant savings in energy use. Electrified trains also provide a quicker trip, enticing more people to trade their car trip for a train ride.



Safety Tip

Once on board Caltrain, find a seat and get comfortable. Passengers should never ride between cars or in the entrance/exit area, even if your trip is a short one.

If the train starts moving while you're still walking through the railcar, be prepared to brace yourself for sudden movements. Handholds are provided throughout the passenger cars.

Expressions - Riders Write

Q: I am a student at San Jose State University living in San Francisco. I would like Caltrain to offer a discount for college students. I pay \$63.75 every five days, and I only go to school twice a week because I cannot afford it if I went every day. Please consider that we, as students, have many other things to pay for such as tuition and books.

A: While Caltrain does not offer student discounts, we do have several discount options to save our riders money such as a monthly pass or the new 8-ride Ticket, which saves customers 15 percent off regular fare costs. Caltrain Monthly Pass buyers who use Muni, SamTrans or VTA as part of their commute have additional Caltrain pass options. For example, VTA allows customers presenting a two-zone or greater adult Caltrain Monthly Pass to receive a free transit connection on its bus and light rail services.

Caltrain Receives Improvement Money

Caltrain is off to a good start this New Year after receiving word that it would receive \$12.2 million from the Santa Clara Valley Transportation Authority to help fund improvements at the Santa Clara and San Jose Diridon stations and other capital planning projects.

The project will improve regional connectivity with ACE and the Capitol Corridor trains at the Santa Clara and San Jose Diridon stations. When work is complete, ACE riders will be able to use the Santa Clara station, which currently doesn't accommodate those trains. A pedestrian tunnel also will be constructed to allow safer access to a new station platform.

At San Jose Diridon station, two new fully-equipped platforms and four new tracks will be added to allow more flexibility at the busy station. The new platforms, which will be connected to the existing pedestrian

continued on page 6

High-Speed Rail Keeps On Rolling

Now that California voters have approved the high-speed rail bond, plans for the new 800-mile rail system are in motion.

The bond, which passed in November, allows the California High-Speed Rail Authority to move forward with plans to operate high-speed rail service from Los Angeles to San Francisco. The authority is looking at eight segments along the rail corridor, with the Caltrain corridor being one, to begin the first phase of the project.

In January, the authority held three scoping meetings at locations in Caltrain's service area to discuss various issues, including the location and configuration of tracks, as well as

support services. Public comments were taken at the meetings and will continue to be accepted until Monday, April 6.

In the next six months, the authority expects to develop preliminary plans of the location of stops and electronic 3-D models of what the system will look like. The design phase and environmental review are expected to take two years. The system is projected to cost a total of \$45 billion, with monies coming from a combination of local, state, federal and private funding sources.

For more information on high-speed rail plans, visit www.cahighspeedrail.ca.gov.

CALTRAIN SPECIAL EVENTS CALENDAR



Take Caltrain to these special events. The station name and any additional transit service are listed below each event.

March 14

158th Annual St. Patrick's Day Parade & Festival
sfstpatricksdaysparade.com
Civic Center Plaza
San Francisco station
Muni Route 47

Begins April 7

San Francisco Giants Baseball
www.sfgiants.com
San Francisco station

Through April 12

Trains Mean Business: The Growth of Los Altos Exhibit
www.losaltoshistory.org
Los Altos History Museum
San Antonio station
VTA Route 40

May 9

KFOG KaBoom
www.kfog.com
San Francisco station

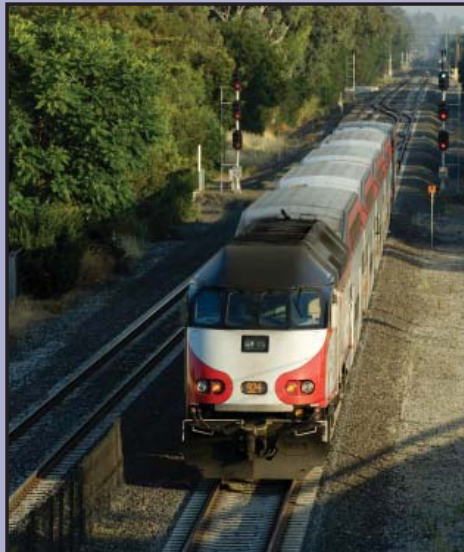
May 17

Bay to Breakers
www.baytobreakers.com
San Francisco station

Fast Facts

Looking for cool places to go on Caltrain during the weekends? Pick up the **latest copy of Weekend Edition** to learn more about upcoming community events. Brochures can be downloaded at www.caltrain.com.

Bicycle commuters are eligible for a **monthly \$20 pre-tax benefit** through their employer. As with the current transportation fringe benefit offered to transit and van-pool users, the funds can come as a cash reimbursement from employers, pre-tax from an employee's salary or a combination of the two. Also, the new year brought an increase in pre-tax benefits for transit and vanpool users from \$115 to \$120 a month. Visit www.apta.com for more information. Visit the League of American Bicyclists at www.bikeleague.org for more details on the bike benefit.



Caltrain offers rail safety presentations for children and adults.

Caltrain offers “**Don't Shortcut Life**” rail safety presentations for students and community groups year-round. To learn more or to schedule a presentation, call 650.508.7934 or e-mail outreach@caltrain.com.

Click on the Fun Destinations icon at www.caltrain.com and receive discounts to restaurants and for various activities around the Bay Area.

Holiday Train Brings Toys & Cash

The holidays were brighter for thousands of children this past season thanks to the generosity of people who donated toys during the eighth annual Caltrain Holiday Train weekend in December.

In conjunction with the U.S. Marine Corps Reserve's Toys for Tots program and the Salvation Army, the Caltrain Holiday Train received a total of 5,309 donated toys and books – up 27 percent from the 2007 toy count of 4,179 - and nearly \$2,250 in cash donations.



Since 2001, more than 40,000 toys have been collected for needy children.

Improvement Money

continued from page 5

tunnel by a ramp that meets Americans with Disabilities Act standards, also will be equipped with mini-high platforms to allow people with disabilities to use the train.

The first step in the project, the demolition of an old maintenance facility on the San Jose site, will take place in March. Construction is tentatively scheduled to be completed in 2011.

As a partner in the Peninsula Corridor Joint Powers Board, which operates Caltrain, VTA contributes capital funds to Caltrain in three different ways: through its annual budget; through funds contributed from Measure A for Caltrain projects directly managed and implemented by VTA; and through Measure A funds contributed to Caltrain projects managed and implemented by Caltrain.

Caltrain Connection is produced by the Peninsula Corridor Joint Powers Board. Comments, questions, contributions and suggestions should be directed to:

Tasha Bartholomew, editor
bartholomewt@caltrain.com
Caltrain Connection
1250 San Carlos Ave.
P.O. Box 3006
San Carlos, CA 94070-1306

Caltrain Board of Directors

Don Gage, chair
Sean Elsbernd, vice chair
Mark Church
José Cisneros
Nathaniel Ford Sr.
Jim Hartnett
Ash Kalra
Arthur L. Lloyd
Ken Yeager

Michael J. Scanlon
Executive Director

1.800.660.4287  www.caltrain.com