



Monthly Safety and Security Report July 2015

Safety Highlights

Construction continues on the demolition and replacement of three roadway bridges in San Francisco. Work began with the 23rd Street bridge. Before demolition began all active utilities needed to be safely supported and protected. Following a job-specific safety briefing, which are held at the beginning of all Caltrain work days, the team reviewed the crane pre-lift procedure.

During the off peak period, crews scheduled a six-hour window to complete the work. This included staging a large crane safely next to the tracks, which was used to move the utility support bridge into place and removal of the crane prior to the late afternoon commute.



Education

Rail Safety Presentations/Activities	City	Attendees
Santa Clara County Suicide Prevention Work Group	San Jose	5



Monthly Safety and Security Report July 2015

Enforcement

Event	JUL 2015	YTD 2015	JUL 2014	YTD 2014
Felony and Misdemeanor Arrests (all)	11	57	14	115
Parking Citations	331	1925	345	2158
Traffic Citations	34	251	46	207
All Other Infraction Citations (including trespassing)	56	474	72	401
Ejections/Contacts: Train, Station, Right of Way	22	252	48	512
Proof-of-Payment Citations	239	1053	151	922
Crisis Interventions w/ Emergency Commitments	4	21	5	23
Total Calls For Police Service	1046	6718	825	5651

Significant Events

July 1: Transit Police responded to the Belmont Caltrain Station on a report of a female who had been struck by a southbound Caltrain. Preliminary information suggests the female may have intentionally placed herself in the path of the oncoming train. The fatality is under investigation by Transit Police.

July 6: Transit Police responded to the San Bruno Caltrain Station on a report of an adult male who had dialed “911” and stated that he was having suicidal thoughts. The subject was located, taken into protective custody, and transported to emergency psychiatric care.

July 9: Transit Police responded to the San Jose Diridon Caltrain Station on a report of an adult male who had told a passerby he was having suicidal thoughts. The subject was located, taken into protective custody, and transported to emergency psychiatric care.

July 15: Transit Police responded to the Santa Clara Caltrain Station on a report of an aggressive adult male. The subject was contacted and it was determined that he was unable to care for himself. He was taken into protective custody, and transported to emergency psychiatric care.

July 26: Transit Police were conducting a routine station check at the Palo Alto Caltrain Station. They noticed an adult male who appeared to be distraught. He was contacted and due to his demeanor the subject was taken into protective custody, and transported to emergency psychiatric care.



Monthly Safety and Security Report July 2015

July 28: Transit Police responded to the San Bruno Caltrain Station on a report of a male who had been struck by a southbound Caltrain. Preliminary information suggests the male may have intentionally placed himself in the path of the oncoming train. The fatality is under investigation by Transit Police.

July 31: Transit Police responded to the Caltrain right of way in San Francisco on a report of a male who had been struck by a southbound Caltrain. Preliminary information suggests the male may have intentionally placed himself in the path of the oncoming train. The fatality is under investigation by Transit Police.

July 1 – July 31: During this period Transit Police continued several enforcement measures in association with Caltrain's special baseball service:

- Extra security details were assigned to the San Francisco Caltrain Station. One arrest was made for public intoxication and one person was cited for minor in possession.

July 1 – July 31: Transit Police responded to one report of an intoxicated person at the Palo Alto Caltrain Station. The individual was arrested and booked into county jail.

July 1 – July 31: Transit Police responded to six reports of persons trespassing on the Caltrain right of way. In each instance, the person was cited and released.

July 1 – July 31: Transit Police conducted routine security checks at various Caltrain stations. As a result, two people were arrested on outstanding misdemeanor warrants and booked into county jail.

Bike Thefts:

- July 1 – July 31: Transit Police received 19 reports of bicycle thefts from various Caltrain stations. The largest number of thefts (12) occurred at the Palo Alto University Avenue Caltrain Station.
- July 3: Transit Police responded to the Palo Alto Caltrain Station on a report of two males who had been seen stealing bicycles from the station. Palo Alto Police Officers detained the two individuals until Transit Police arrived. Both suspects were arrested and booked into county jail for attempted petty theft.
- July 19: Transit Police responded to the California Avenue Caltrain Station in Palo Alto on a report of a suspicious male looking at bicycles at the Caltrain station. The person was contacted and was found with several burglary tools in his possession. He was cited for possessing burglary tools.

July 1 – July 31: Transit Police received six reports of vehicle vandalisms from various Caltrain stations. The largest number of vandalisms (five) occurred at the South San Francisco Caltrain Station. This case is under investigation by Transit Police.

Engineering

Maintenance of Way

- TASI completed 11 months of injury-free work
- Installed 185 tons of main line ballast
- Surfaced 10,173 lineal feet of track
- Completed 16 thermite welds
- Trimmed trees and removed vegetation at 21 locations
- Repaired fencing at 12 locations including the location below at Mile Post 50



Before



After

- Performed semi-annual weed-spraying along the main line and various locations throughout the 52 mile corridor



Monthly Safety and Security Report July 2015

- Removed vegetation at Santa Clara Drill track



Before

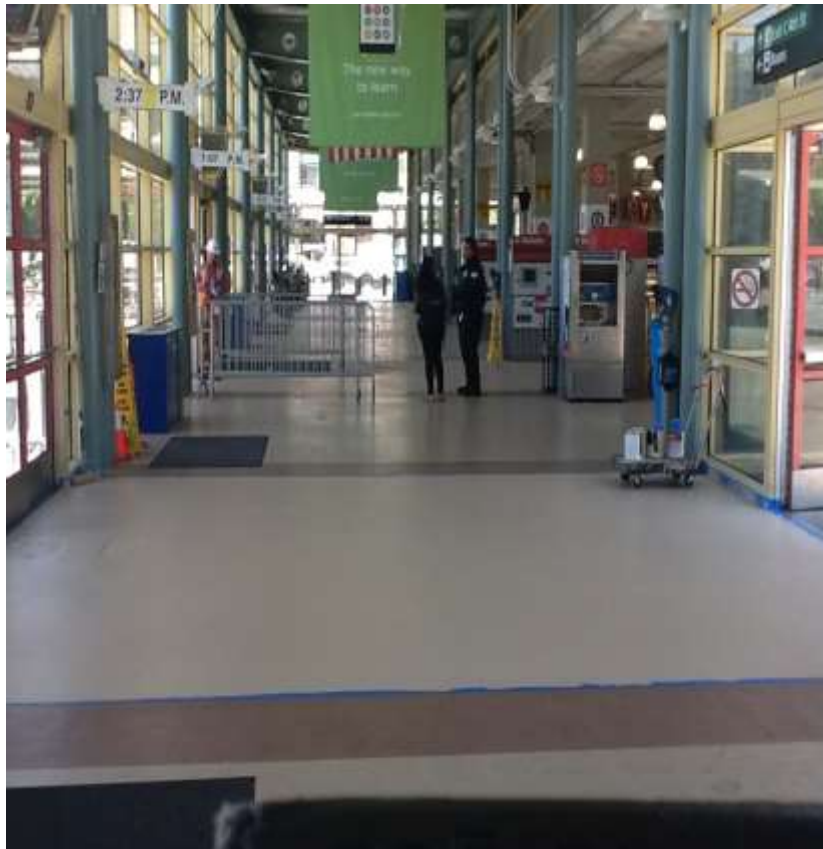


After

Monthly Safety and Security Report July 2015

Stations

- Painted the canopies and the interior station flooring at the 4th and King station



Monthly Safety and Security Report July 2015

- Provided flagging support for replacement of the center track fence at the San Mateo station



- Replaced the mulch in planters along the Burlingame station platforms

