



# Caltrain Modernization Quarterly Update

February 2016



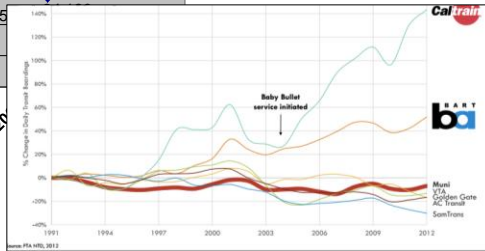
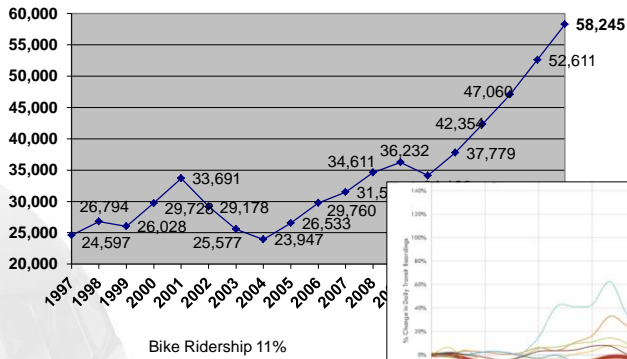
## About Caltrain

- Diesel commuter rail system
- SF to SJ area
- 77 mile corridor, 32 stations
- Today Ridership: ~ 63,000+ weekday
- 2040 Ridership: ~100,000+ weekday





## Ridership Growth



## Caltrain Modernization Program

- Advanced Signal System: CBOSS PTC (2016)
- Peninsula Corridor Electrification Project (2020)





## Peninsula Corridor Electrification Project

Area	Project	Service
51+ miles San Francisco to San Jose (Tamien Station)	Electrification: <ul style="list-style-type: none"><li>• Overhead Contact System (OCS)</li><li>• Traction Power Facilities</li></ul> Electric Multiple Units (EMUs) <ul style="list-style-type: none"><li>• 75 percent</li></ul>	Up to 79 mph Service Increase <ul style="list-style-type: none"><li>• 6 trains / hour / direction</li><li>• More station stops / reduced travel time</li><li>• Restore Atherton &amp; Broadway service</li></ul> Mixed-fleet service (interim period) Cont. tenant service

6



## PCEP Reporting

- Monthly Reports
  - Started June 2014 (updated format Oct 2015)
- Quarterly Reports
  - Started February 2016
  - Will be available on the website

6

## Project Delivery Efforts



## Electrification Infrastructure

- Confidential Information, Transparent Process
- Complete
  - Three shortlisted firms selected
  - Partner participation: MTC, CHSRA, VTA, SMCTA, SFMTA, SFCTA, CCSF
  - Issued addendum for Best and Final Offer process
  - Additional site tour for shortlisted
- To Do
  - Receive Best and Final Offer proposals and evaluate
  - Negotiations to finalize contract

## Electric Trains (EMU)

- Confidential Information, Transparent Process
- Complete
  - RFI, RFP, Pre-proposal meeting and site tour
  - Received expanded FRA vehicle waiver
  - Partners will participate in evaluation: MTC, CHSRA, VTA, SMCTA, SFMTA, SFCTA, CCSF
- To Do
  - Vehicle proposal due February
  - Maintenance proposal due March
  - Revised contract award date TBD

## Other Delivery Efforts

- Tunnel Notching
- CEMOF Modification
- Environmental Consultation
- City / County Agreements
- Community Outreach
- Utilities Coordination
- Real Estate
- Risk Management
- FTA Coordination and Oversight



## Future Updates (Post Award)

- Safety
- Labor
- Disadvantage & Small Business Enterprises
- Construction Pictures

11



## Funding Update

- FTA Core Capacity
  - \$125m in Presidential FY17 Budget (plus \$72m from FY14-16)
  - Request in engineering phase and full funding grant agreement (FFGA) to be done
- 6-Party Supplemental MOU
  - Target Spring 2016
- CHSRA Funding Agreements
  - Target Summer 2016

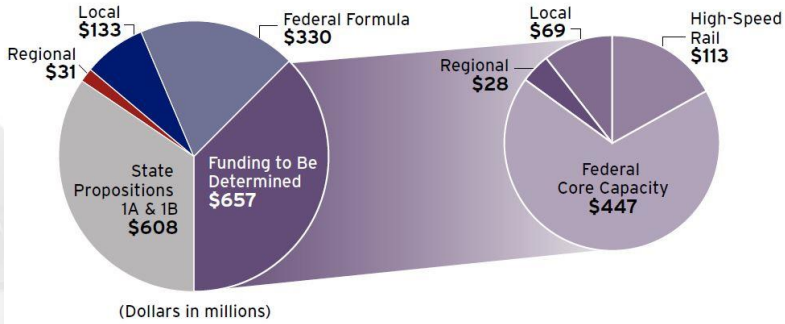
12



# Funding Breakdown

Peninsula Corridor Electrification  
Project Funding  
\$1.8 Billion

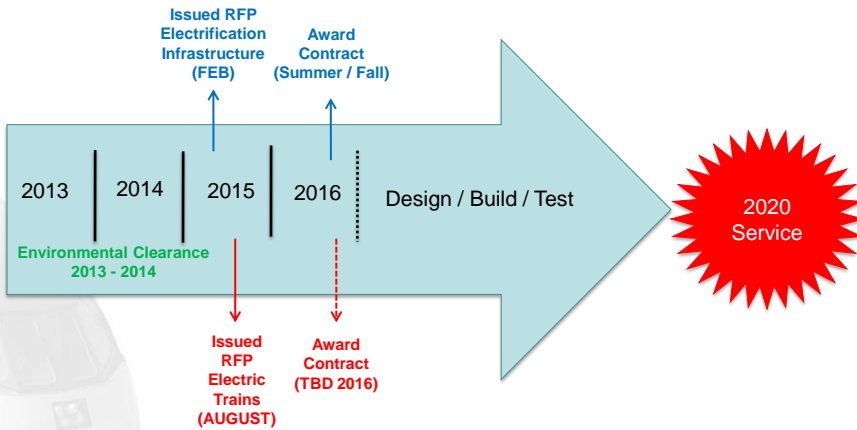
Gap Funding Strategy  
\$657 million



Note: Schedule subject to change



# Schedule



Note: Schedule subject to change after analysis of proposals

## Stakeholder Meetings

- Local Policy Maker Group & Staff Equivalent
  - Created 2012; meets bi-monthly
  - Elected officials 17 cities and 3 counties
  - Focus CalMod Project
  - Website:  
<http://www.caltrain.com/projectsplans/CaltrainModernization/Meetings.html>
- January 2016
  - Alternate presentations with HSR (Jan, March, May etc)
  - Focus Blended System

15

## Blended System Vision

### Community-driven Approach

2-track System (Primarily)

Up to 110 mph

Partially Grade Separated

6 Caltrains / per peak hour per direction

Up to 4 HSR trains / per peak hour per direction\*

\*Based on LTK computer model simulation (March 2012)

16



# Questions

